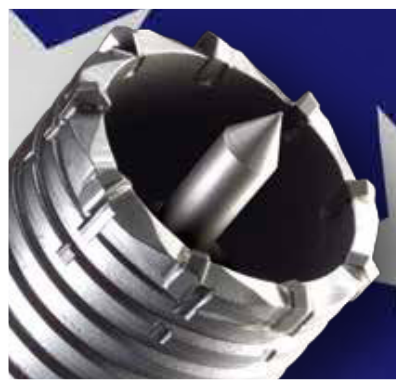


# **RELTON** CORPORATION



**ARCADIA, CALIFORNIA, U.S.A.**



**R-16**

# RELTON CORPORATION

## RELTON STORY

In 2016, Relton will mark 70 years in business; we began in 1946 as the Ter-mite Drill Company. The company's first product was the multiple-carbide, core-style, rotary masonry drill bit invented by our founder. This basic design quickly became the standard of the industry. Relton has since become the **broadest-line supplier of hammer and rotary bits and hole saws.**

Recent Relton innovations include our patented **Pyramid Point®** hammer tip design with a central point surrounded by 4 cutters for precise smooth drilling, in spline, SDS-max, and now SDS+. Our **rebar cutters** in straight shank and SDS+ are the industry standard, and our general purpose **Groo-V Tip® (GRT®)** rotary/percussion bit line is perfect for hard metal, granite, and other difficult materials.

**New Rapid Tap®**, our ozone-friendly hard-metal cutting fluid, heads a complete line of cutting fluids and oils, which includes **A-9®** for aluminum, bio-degradable **Option 1®**, and more recent additions in the 1990's. In 1994, Relton formulated **TCO-14™** (dark) and **TCO-16™** (light) Thread-Cutting Oil, and in 1995, we introduced **Air-Flo®** air tool oil. Further expansion in 1999 brought **Rel Saw™**, a semi-synthetic fluid for band sawing, **Stick-Kut™**, a lubricating stick wax, and **New Rapid Tap® Paste**.

Relton drill bits are used by the construction trades in the drilling of concrete and other masonry, while the hole saws are used in the cutting of diverse materials such as metal, wood, fiberglass, ceramic tile, pipe and stucco. Relton makes a wide variety of cataloged products, and also specialty bits and hole saws to customers' specifications.

How have we continued in business for over 70 years in the face of stiff competition from companies far larger than we? **We maintain a high service level** - shipping quickly from the broadest line in the business. **We produce high-quality products** - testing them constantly to ensure that quality. **We're flexible** - making the specialty products you need, not only the cataloged items you see here. **We're unique** - boasting one of the few production-grade, long-lasting hole saw lines in the world.

## FACTS TO REMEMBER ABOUT RELTON MASONRY TOOLS

Most Relton bits can be easily resharpened. The high quality carbide tip is also replaceable, allowing for possible rebuilding of the entire bit.

Relton hammer bits comply with ANSI Standard B212.15-1994 where applicable. All Relton Tools should be used in conformity with the power tool manufacturers' specifications.

Special diameters or lengths can be produced on request. Because certain restrictions apply to this offer, please discuss your request with your Authorized Relton Distributor or the Relton factory in Arcadia, California.

## WE STAND BEHIND OUR PRODUCTS

All Relton Tools are manufactured to exacting specifications and are guaranteed to be free of defects in workmanship or material. If inspection of returned products leads Relton to conclude that a product is defective, Relton will promptly repair or replace that product, free of charge. Relton Corporation assumes no responsibility for products damaged by user misuse or altered by others.

**Warranty limitation on extra-long bits:** Warranty for breakage is limited to Relton discretion—see page 17 for bit life suggestions. No other guarantee, written or verbal, is authorized.

Please return the tool alleged to be defective, transportation prepaid, to:

Relton Corporation  
317 Rolyn Place  
Arcadia, California 91007-2838

## WARNING

- Protective goggles should be worn when drilling, sawing, etc. Safety steps should be taken in anticipation of possible sudden binding or breakage of any tool.
- Relton Corporation provides a factory resharpening service. We do not recommend that the user attempt to resharpen the tool.
- Relton reserves the right to make design or formula changes at any time, with or without notice.
- Weights listed in this catalog are approximate. They do not include the weight of the box or packing materials.

© Relton Corporation 2016

We manufacture special items on request. If you don't see what you're looking for, call us---we'll try to accommodate your needs.

Weights are for product. Boxes and packing material are not included, so do not use to calculate actual shipping weight.

# TABLE OF CONTENTS

## CARBIDE DIVISION

### Technical Information

Carbide Masonry Tools	3
-----------------------	---

### Rotary Hammer Bits

SDS+	4,5
Quik-Stop	5
SDS-max®, Pyramid Point®	6
Spline, Pyramid Point®	7
Forged Hammer Tools	8
Solid-Body "Hard Head"	9
Hammer Core	10

### Adaptors

Quik-Lok™	5
-----------	---

### Rotary Percussion Bits

Ram-Tip™	11
Groo-V Tip®	12
Screw-Type Anchor Bits	12
R4X™	13

### Rotary Only Bits

Tip-Top™	13
----------	----

### Rebar Cutters

Rebar Cutters	15
---------------	----

### Specialty Carbide Bits

How to Order	16
--------------	----

### Factory Service Schedule

Bit Retipping	17
---------------	----

## HOLE SAW DIVISION

### Brazed Carbide Hole Saw

Hard Plastic / Stucco	19
Wood / Fiberglass	19
Metal-Cutting	20
Interrupted-Cut	20
Tub, Tile, & Spa	21
Thin Gauge/Sheet Metal	21
Shanks & Pilots	21

### Specialty Hole Saws

How to order	22
--------------	----

### Factory Service

Hole Saw Retipping	22
--------------------	----

## CHEMICAL DIVISION

### Metal-Cutting Fluids

New Rapid Tap®	24
A-9®	24
Option 1®	25

### Band Saw Products

Rel Saw™ (Recirculating Fluid)	25
Stick-Kut™ (Stick Wax)	27

### Thread Cutting Oil

TCO-14™ Dark	26
TCO-16™ Light	26

### Air Tool Oil

Air-FLO®	27
----------	----

Warehouse Locations / Sales Offices	Back Cover
-------------------------------------	------------

## Relton Corporation on the Internet

web page	<a href="http://www.relton.com">www.relton.com</a>
----------	--

e-mail	<a href="mailto:info@relton.com">info@relton.com</a>
--------	--

# TECHNICAL INFORMATION

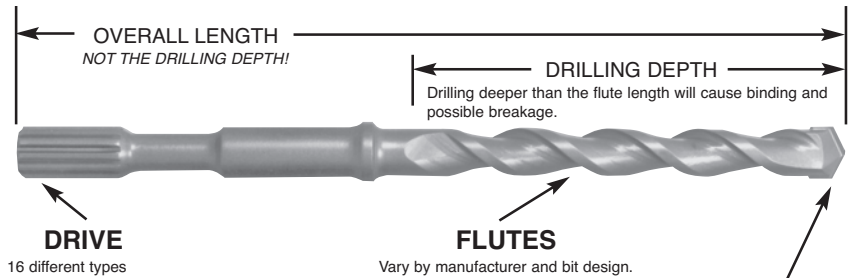
## CARBIDE MASONRY TOOLS

### A.N.S.I. B212.15-1994

#### AMERICAN NATIONAL STANDARDS INSTITUTE CARBIDE-TIPPED-DRILL TOLERANCES

Developed to insure maximum holding power of concrete anchors by matching drill tolerances to anchor dimensions. Using a drill which is worn or out of tolerance can drastically reduce an anchor's performance.

NOMINAL DRILL DIAMETER	TOLERANCE BAND	NOMINAL DRILL DIAMETER	TOLERANCE BAND
3/16"	.206" - .198"	11/16"	.723" - .713"
1/4"	.268" - .260"	3/4"	.787" - .775"
5/16"	.335" - .327"	7/8"	.917" - .905"
3/8"	.398" - .390"	1"	1.042" - 1.030"
7/16"	.468" - .458"	1 1/8"	1.175" - 1.160"
1/2"	.530" - .520"	1 1/4"	1.300" - 1.285"
9/16"	.592" - .582"	1 3/8"	1.425" - 1.410"
5/8"	.660" - .650"	1 1/2"	1.550" - 1.535"



**CARBIDE TIP** is composed of a powder made up of Tungsten Carbide, Carbon, Cobalt and other metals which, under heat and pressure, are formed into a bit tip. Since there are only a few manufacturers of carbide, it is primarily the process and quality control of brazing the tip to the drill body which differentiate bit longevity and quality. The brazing material, such as silver-copper alloy, must allow for the difference in expansion and contraction between the carbide tip and the steel body, as well maintain shock-resistance.



1/8" to 1"



1/8" to 1"



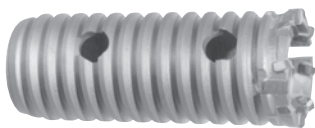
5/32" to 1 1/8"



3/8" to 1 1/2"



3/8" to 2 1/2"



up to 5"

**Fast Spiral Rotary:** Generally used in rotary drilling. Speed range 450-700 RPM to 1/2" diameter, 350-500 RPM from 5/8" and up. Rotary bits do not break up the concrete, but actually grind it under operator pressure.

**Rotary/Percussion:** Generally used in lightweight, mechanical, vibrating hammers. Speed range 1300-3500 RPM, at up to 50,000 blows per minute. The impacting action created by the hammer fractures the concrete into tiny granules.

**Rotary Hammer:** Used in electro-pneumatic rotary hammers. Speed range 400-1000 RPM at up to 4500 blows per minute. SDS+ is currently the most popular shank type for holes up to 5/8". Spline and SDS-max for holes 3/4" and larger.

**Rebar Cutter:** Used to cut holes through embedded steel reinforcing bar. It is used to prevent damage to the hammer bit, which occurs if the hammer bit is used after rebar is encountered.

**Core Bit:** The most effective way of drilling a large hole since you are only cutting the circumference. Both rotary and hammer types are available. Rotary core bits require a great deal of pressure and are suitable for very brittle or thin materials. Hammer core bits offer speed and economy only if rebar is not encountered.

### California Proposition 65

The state of California has determined that many substances such as concrete, wood, metal, and paint may contain Prop. 65 substances. (Some other states have somewhat similar legislation and regulation.) California authorities believe that Prop. 65 requires a WARNING that drilling, sawing, cutting, etc. into such materials may expose the driller, sawer, etc. to the Prop. 65 substances contained in the material being drilled, sawed, etc. Therefore, Relton offers the following:

### Proposition 65 Warning

You can create dust when you cut, sand, drill or grind materials such as wood, paint, metal, concrete, cement or other masonry. This dust often contains chemicals known to cause cancer, birth defects, or other reproductive harm.

The following referenced trademarks are the property of the companies indicated:

AEG,<sup>®</sup> AEG Power Tool Corp. • B&D,<sup>®</sup> Black & Decker Mfg. Co. • BOSCH,<sup>®</sup> Robert Bosch Corporation • HILTI,<sup>®</sup> Hilti Corporation. • HITACHI,<sup>®</sup> Hitachi Koki Company Ltd. • KANGO,<sup>®</sup> Kango Wolf Power Tools U.S.A. • MAKITA,<sup>®</sup> Makita U.S.A., Inc. • METABO,<sup>®</sup> Ferrostal-Metabo Tool Corporation • MILLERS FALLS,<sup>®</sup> The Ingersoll-Rand Co. • MILWAUKEE,<sup>®</sup> Milwaukee Electric Tool Corporation • PHILLIPS,<sup>®</sup> ITT Phillips Drill Company, PORTER-CABLE,<sup>®</sup> Porter-Cable Corporation • RAMSET,<sup>®</sup> Ramset Fastening Systems • ROCKWELL,<sup>®</sup> Rockwell International, Inc. • RYOBI,<sup>®</sup> Ryobi America Corporation • SDS+<sup>®</sup>, SDS-max,<sup>®</sup> Robert Bosch Corporation • SKIL,<sup>®</sup> Skil Corporation • TAPCON,<sup>®</sup> ITW Buildex



# HAMMER BITS - SDS+ SHANK

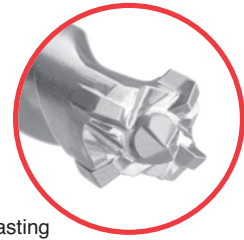


## SINGLE CUTTER

POINT DIA.	OVERALL LENGTH	DRILLING DEPTH	PART NO.	LIST PRICE	WT. (lbs)
5/32"	4 1/2"	2 1/2"	<b>207-1-4*</b>	\$ 15.00	0.1
5/32"	6"	4"	<b>207-1-6*</b>	15.00	0.1
5/32"	8"	6"	<b>207-1-8*</b>	16.00	0.1
3/16"	4 1/2"	2 1/2"	<b>207-3-4*</b>	8.00	0.1
3/16"	6"	4"	<b>207-3-6*</b>	9.00	0.1
3/16"	8"	6"	<b>207-3-8*</b>	11.00	0.1
3/16"	10"	8"	<b>207-3-10</b>	22.00	0.2
3/16"	14"	12"	<b>207-3-14</b>	32.00	0.2
3/16"	20"	18"	<b>207-3-20</b>	34.00	0.3
7/32"	6"	4"	<b>207-2-6*</b>	12.00	0.1
7/32"	10"	8"	<b>207-2-10</b>	25.00	0.3
7/32"	16"	14"	<b>207-2-16</b>	34.00	0.5
7/32"	20"	18"	<b>207-2-20</b>	37.00	0.2
1/4"	4"	2"	<b>207-4-4*</b>	8.00	0.1
1/4"	6"	4"	<b>207-4-6*</b>	9.00	0.1
1/4"	8"	6"	<b>207-4-8*</b>	11.00	0.2
1/4"	10"	8"	<b>207-4-10</b>	19.00	0.3
1/4"	14"	12"	<b>207-4-14</b>	25.00	0.3
1/4"	20"	18"	<b>207-4-20</b>	29.00	0.4
1/4"	26"	24"	<b>207-4-26</b>	40.00	0.5
9/32"	26"	24"	<b>207-4-5-8</b>	20.00	0.3
5/16"	6"	4"	<b>207-5-6*</b>	13.00	0.2
5/16"	10"	8"	<b>207-5-10</b>	21.00	0.3
5/16"	14"	12"	<b>207-5-14</b>	25.00	0.3
3/8"	6"	4"	<b>207-6-6*</b>	11.00	0.2
3/8"	10"	8"	<b>207-6-10</b>	21.00	0.3
3/8"	14"	12"	<b>207-6-14</b>	26.00	0.4
3/8"	18"	16"	<b>207-6-18</b>	38.00	0.5
3/8"	25"	22"	<b>207-6-25</b>	57.00	0.7
3/8"	38"	36"	<b>207-6-38</b>	252.00	1.0
7/16"	6"	4"	<b>207-7-6*</b>	21.00	0.3
7/16"	12"	10"	<b>207-7-12</b>	26.00	0.5
1/2"	6"	4"	<b>207-8-6*</b>	14.00	0.3
1/2"	10"	8"	<b>207-8-10</b>	29.00	0.4
1/2"	14"	12"	<b>207-8-14</b>	35.00	0.6
1/2"	18"	16"	<b>207-8-18</b>	45.00	0.8
1/2"	25"	22"	<b>207-8-25</b>	59.00	0.9
1/2"	38"	36"	<b>207-8-38</b>	273.00	1.3
9/16"	6"	4"	<b>207-9-6*</b>	25.00	0.3
9/16"	12"	10"	<b>207-9-12</b>	36.00	0.6
9/16"	18"	16"	<b>207-9-18</b>	51.00	0.8
5/8"	8"	6"	<b>207-10-8*</b>	25.00	0.5
5/8"	14"	12"	<b>207-10-14</b>	47.00	0.8
5/8"	18"	16"	<b>207-10-18</b>	62.00	0.9
11/16"	10"	8"	<b>207-11-10</b>	56.00	0.6
3/4"	8"	6"	<b>207-12-8</b>	43.00	0.6
3/4"	14"	12"	<b>207-12-14</b>	56.00	1.0
3/4"	18"	16"	<b>207-12-18</b>	72.00	1.3
13/16"	14"	12"	<b>207-13-14</b>	84.00	1.4
27/32"	8"	6"	<b>207-13A-8</b>	73.00	0.8
7/8"	8"	6"	<b>207-14-8</b>	70.00	0.8
7/8"	14"	12"	<b>207-14-14</b>	77.00	1.4
7/8"	18"	16"	<b>207-14-18</b>	87.00	1.7
1"	8"	6"	<b>207-16-8</b>	71.00	1.0
1"	14"	12"	<b>207-16-14</b>	84.00	2.0
1"	18"	16"	<b>207-16-18</b>	95.00	2.3
1 1/8"	8"	6"	<b>207-18-8</b>	78.00	1.3
1 1/8"	18"	16"	<b>207-18-18</b>	98.00	3.0

## MULTIPLE CUTTER

## PYRAMID POINT®



- Patented, new technology tip
- 5 Premium-grade carbide inserts
- Faster smoother drilling and longer lasting
- Precise hole location, easy start center point
- Heat-treated, shot-peened, superior steel
- Ultra-efficient dust removal flute design
- Available up to 60" drilling depth
- 38" bits have 12" flute length and undercut body

POINT DIA.	OVERALL LENGTH	DRILLING DEPTH	PART NO.	LIST PRICE	WT. (lbs)
5/8"	8"	6"	<b>P207-10-8</b>	\$ 37.00	0.5
5/8"	14"	12"	<b>P207-10-14</b>	59.00	0.7
5/8"	18"	16"	<b>P207-10-18</b>	75.00	0.8
5/8"	25"	22"	<b>P207-10-25</b>	88.00	1.1
5/8"	38"	36"	<b>P207-10-38</b>	283.00	2.0
11/16"	25"	22"	<b>P207-11-25</b>	105.00	1.3
3/4"	8"	6"	<b>P207-12-8</b>	56.00	0.6
3/4"	14"	12"	<b>P207-12-14</b>	69.00	1.0
3/4"	18"	16"	<b>P207-12-18</b>	84.00	1.2
3/4"	25"	22"	<b>P207-12-25</b>	142.00	1.7
3/4"	38"	36"	<b>P207-12-38</b>	297.00	2.2
7/8"	8"	6"	<b>P207-14-8</b>	82.00	0.7
7/8"	14"	12"	<b>P207-14-14</b>	89.00	1.3
7/8"	18"	16"	<b>P207-14-18</b>	99.00	1.8
7/8"	38"	36"	<b>P207-14-38</b>	338.00	2.8
1"	8"	6"	<b>P207-16-8</b>	84.00	1.0
1"	18"	16"	<b>P207-16-18</b>	108.00	2.0
1"	25"	22"	<b>P207-16-25</b>	162.00	3.0
1"	38"	36"	<b>P207-16-38</b>	410.00	3.6
1 1/8"	8"	6"	<b>P207-18-8</b>	90.00	1.1
1 1/8"	18"	16"	<b>P207-18-18</b>	110.00	2.0

Pyramid Point Bits are not available in bulk.

## HAMMER BIT-SDS+ 5-PIECE DRILL SETS



### Refillable Case

Contains: 3/16" x 6"  
1/4" x 6"  
5/16" x 6"  
3/8" x 6"  
1/2" x 6"

PART NO.	LIST PRICE	WT.
<b>SDS+ 207-K5</b>	\$58.00	0.8

**\* 25 pc. quantities available in bulk packaging**

To order bulk, use prefix "B" before part number.  
Example: **B207-8-6**

## HAMMER BITS - SDS+ SHANK



### FEATURES / BENEFITS

- Shoulder prevents over drilling - nice when overhead
- No lost time or energy drilling deeper than necessary
- Less likely to hit reinforcing steel or post-tensioned cable in concrete
- Anchor is set at specified depth, does not drop too far into hole

DIAMETER	DRILL DEPTH	RELTON PART NO.	LIST PRICE	WT. (lbs)
1/4"	13/16"	207STP-4-13	\$25.50	0.08
3/8"	11/16"	207STP-6-11	23.50	0.10
3/8"	1-1/16"	207STP-6-17	24.50	0.12
1/2"	13/16"	207STP-8-13	26.50	0.16
1/2"	1-11/16"	207STP-8-27	27.50	0.20
5/8"	1-3/16"	207STP-10-19	30.50	0.22
5/8"	2-1/16"	207STP-10-33	31.00	0.24

## SDS+ EXTENSION



### SDS+ EXTENSION

PART NO.	DESCRIPTION	LIST PRICE	WT. (lbs)
207EXT18	SDS+ to SDS+ 18"	\$ 145.00	1.9
207EXT30	SDS+ to SDS+ 30"	\$ 252.00	2.7

Use of extensions increases drill reach, not drill depth.

Additional Shank-types available on request.  
Replacement parts are available on request.

## QUIK-LOK™ ADAPTORS

### Quik-Lok™ Adaptors accept SDS+ Shank Bits



### SDS-max SHANK

PART NO.	DESCRIPTION	LIST PRICE	WT. (lbs)
QL-MX	SDS-max to SDS+	\$ 118.00	1.4



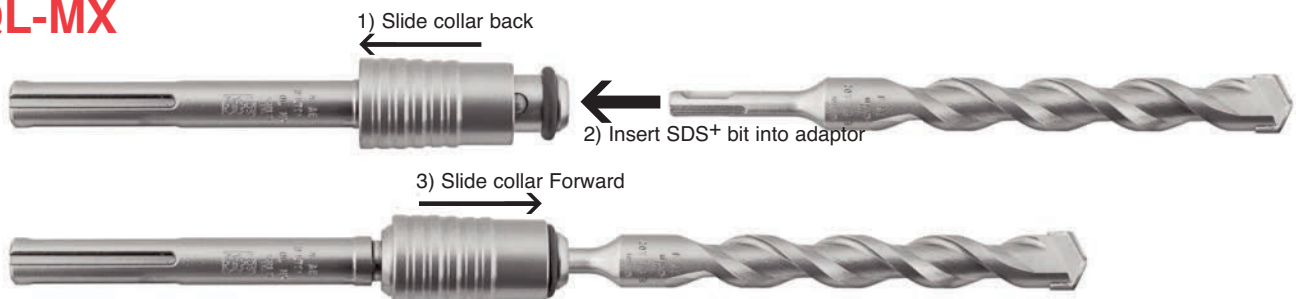
### SPLINE SHANK

PART NO.	DESCRIPTION	LIST PRICE	WT. (lbs)
QL-202	Spline to SDS+	\$ 112.00	1.4

## QUIK-LOK™ ADAPTORS

### 3 Easy Steps

#### QL-MX



# HAMMER BITS – SDS-max® SHANK



## SINGLE CUTTER

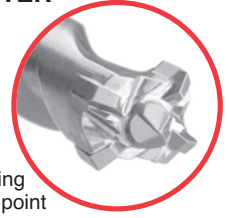
POINT DIA.	OVERALL LENGTH	DRILLING DEPTH	PART NO.	LIST PRICE	WT. (lbs)
3/8"	10"	4"	<b>MX-6-10</b>	\$ 62.00	0.8
3/8"	14"	8"	<b>MX-6-14</b>	63.00	0.8
3/8"	18"	12"	<b>MX-6-18</b>	71.00	0.9
7/16"	14"	8"	<b>MX-7-14</b>	63.00	0.8
1/2"	14"	8"	<b>MX-8-14</b>	64.00	0.9
1/2"	18"	12"	<b>MX-8-18</b>	71.50	1.1
1/2"	22"	16"	<b>MX-8-22</b>	88.00	1.2
1/2"	28"	22"	<b>MX-8-28</b>	97.00	1.4
1/2"	42"	36"	<b>MX-8-42</b>	190.00	1.7
1/2"	54"	48"	<b>MX-8-54</b>	298.00	2.2
1/2"	66"	60"	<b>MX-8-66</b>	321.00	2.7
9/16"	14"	8"	<b>MX-9-14</b>	71.00	1.0
9/16"	18"	12"	<b>MX-9-18</b>	80.00	1.1
9/16"	22"	16"	<b>MX-9-22</b>	95.00	1.3
9/16"	28"	22"	<b>MX-9-28</b>	117.00	1.5
5/8"	14"	8"	<b>MX-10-14</b>	71.00	1.1
5/8"	18"	12"	<b>MX-10-18</b>	81.00	1.3
5/8"	22"	16"	<b>MX-10-22</b>	101.00	1.4
5/8"	28"	22"	<b>MX-10-28</b>	120.00	1.6
11/16"	14"	8"	<b>MX-11-14</b>	73.00	1.1
11/16"	22"	16"	<b>MX-11-22</b>	105.00	1.6
3/4"	14"	8"	<b>MX-12-14</b>	76.00	1.2
3/4"	18"	12"	<b>MX-12-18</b>	91.00	1.5
3/4"	22"	16"	<b>MX-12-22</b>	105.00	1.7
3/4"	28"	22"	<b>MX-12-28</b>	145.00	2.0
13/16"	14"	8"	<b>MX-13-14</b>	117.00	1.3
13/16"	22"	16"	<b>MX-13-22</b>	137.00	1.9
27/32"	14"	8"	<b>MX-13A-14</b>	117.00	1.3
27/32"	22"	16"	<b>MX-13A-22</b>	137.00	1.9
7/8"	14"	8"	<b>MX-14-14</b>	80.00	1.4
7/8"	18"	12"	<b>MX-14-18</b>	97.00	1.8
7/8"	22"	16"	<b>MX-14-22</b>	114.00	2.1
7/8"	28"	22"	<b>MX-14-28</b>	143.00	2.6
1"	14"	8"	<b>MX-16-14</b>	87.00	1.7
1"	18"	12"	<b>MX-16-18</b>	106.00	2.2
1"	22"	16"	<b>MX-16-22</b>	128.00	2.6
1"	28"	22"	<b>MX-16-28</b>	146.00	3.1
1 1/8"	14"	8"	<b>MX-18-14</b>	108.00	1.9
1 1/8"	22"	16"	<b>MX-18-22</b>	135.00	3.1
1 1/8"	28"	22"	<b>MX-18-28</b>	189.00	3.9
1 1/4"	14"	8"	<b>MX-20-14</b>	125.00	2.3
1 1/4"	22"	16"	<b>MX-20-22</b>	154.00	3.6
1 1/4"	28"	22"	<b>MX-20-28</b>	217.00	4.3
1 3/8"	22"	16"	<b>MX-22-22</b>	180.00	4.1
1 1/2"	14"	8"	<b>MX-24-14</b>	149.00	2.9
1 1/2"	22"	16"	<b>MX-24-22</b>	210.00	4.8
1 1/2"	28"	22"	<b>MX-24-28</b>	325.00	6.2



## MULTIPLE CUTTER

## PYRAMID POINT®

- Patented, new technology tip
- 5 Premium-grade carbide inserts
- Faster smoother drilling and longer lasting
- Precise hole location, easy start center point
- Heat-treated, shot-peened, superior steel
- Ultra-efficient dust removal flute design
- Available in longer lengths; call factory for a quote
- 42", 54", & 66" bits have 31" flute length and undercut body



POINT DIA.	OVERALL LENGTH	DRILLING DEPTH	PART NO.	LIST PRICE	WT. (lbs)
5/8"	14"	8"	<b>PMX-10-14</b>	\$ 74.00	1.1
5/8"	18"	12"	<b>PMX-10-18</b>	84.00	1.3
5/8"	22"	16"	<b>PMX-10-22</b>	106.00	1.4
5/8"	32"	26"	<b>PMX-10-32</b>	161.00	1.8
5/8"	42"	36"	<b>PMX-10-42</b>	204.00	2.8
5/8"	54"	48"	<b>PMX-10-54</b>	398.00	2.8
5/8"	66"	60"	<b>PMX-10-66</b>	415.00	3.4
3/4"	14"	8"	<b>PMX-12-14</b>	81.00	1.2
3/4"	18"	12"	<b>PMX-12-18</b>	95.00	1.5
3/4"	22"	16"	<b>PMX-12-22</b>	109.00	1.7
3/4"	32"	26"	<b>PMX-12-32</b>	170.00	2.3
3/4"	42"	36"	<b>PMX-12-42</b>	216.00	2.9
3/4"	54"	48"	<b>PMX-12-54</b>	420.00	3.5
3/4"	66"	60"	<b>PMX-12-66</b>	435.00	4.5
7/8"	14"	8"	<b>PMX-14-14</b>	84.00	1.4
7/8"	18"	12"	<b>PMX-14-18</b>	101.00	1.8
7/8"	22"	16"	<b>PMX-14-22</b>	120.00	2.1
7/8"	32"	26"	<b>PMX-14-32</b>	189.00	2.9
7/8"	42"	36"	<b>PMX-14-42</b>	246.00	3.7
7/8"	54"	48"	<b>PMX-14-54</b>	454.00	4.6
7/8"	66"	60"	<b>PMX-14-66</b>	470.00	5.6
1"	14"	8"	<b>PMX-16-14</b>	94.00	1.7
1"	18"	12"	<b>PMX-16-18</b>	110.00	2.2
1"	22"	16"	<b>PMX-16-22</b>	135.00	2.6
1"	32"	26"	<b>PMX-16-32</b>	220.00	3.5
1"	42"	36"	<b>PMX-16-42</b>	287.00	4.6
1"	54"	48"	<b>PMX-16-54</b>	509.00	5.8
1"	66"	60"	<b>PMX-16-66</b>	526.00	6.7
1 1/8"	14"	8"	<b>PMX-18-14</b>	115.00	1.9
1 1/8"	22"	16"	<b>PMX-18-22</b>	142.00	3.1
1 1/8"	32"	26"	<b>PMX-18-32</b>	244.00	4.2
1 1/8"	42"	36"	<b>PMX-18-42</b>	358.00	5.4
1 1/8"	54"	48"	<b>PMX-18-54</b>	615.00	6.6
1 1/8"	66"	60"	<b>PMX-18-66</b>	630.00	8.0
1 1/4"	14"	8"	<b>PMX-20-14</b>	133.00	2.3
1 1/4"	22"	16"	<b>PMX-20-22</b>	162.00	3.6
1 1/4"	32"	26"	<b>PMX-20-32</b>	259.00	5.1
1 1/4"	42"	36"	<b>PMX-20-42</b>	365.00	6.4
1 1/4"	54"	48"	<b>PMX-20-54</b>	632.00	8.1
1 1/4"	66"	60"	<b>PMX-20-66</b>	647.00	9.8
1 3/8"	22"	16"	<b>PMX-22-22</b>	189.00	4.1
1 3/8"	32"	26"	<b>PMX-22-32</b>	308.00	5.9
1 3/8"	42"	36"	<b>PMX-22-42</b>	445.00	7.6
1 3/8"	54"	48"	<b>PMX-22-54</b>	730.00	9.2
1 3/8"	66"	60"	<b>PMX-22-66</b>	748.00	11.1
1 1/2"	14"	8"	<b>PMX-24-14</b>	158.00	2.9
1 1/2"	22"	16"	<b>PMX-24-22</b>	221.00	4.8
1 1/2"	32"	26"	<b>PMX-24-32</b>	340.00	7.1
1 1/2"	42"	36"	<b>PMX-24-42</b>	477.00	8.9
1 1/2"	54"	48"	<b>PMX-24-54</b>	771.00	10.8
1 1/2"	66"	60"	<b>PMX-24-66</b>	790.00	13.1

# HAMMER BITS – SPLINE SHANK



## SINGLE CUTTER

POINT DIA.	OVERALL LENGTH	DRILLING DEPTH	PART NO.	LIST PRICE	WT. (lbs)
3/8"	10"	4"	<b>202-6-10</b>	\$ 54.00	0.8
3/8"	14"	8"	<b>202-6-14</b>	56.00	0.8
3/8"	18"	12"	<b>202-6-18</b>	62.00	0.9
7/16"	14"	8"	<b>202-7-14</b>	56.00	0.8
1/2"	14"	8"	<b>202-8-14</b>	56.00	1.0
1/2"	18"	12"	<b>202-8-18</b>	62.00	1.1
1/2"	22"	16"	<b>202-8-22</b>	79.00	1.2
1/2"	28"	22"	<b>202-8-28</b>	95.00	1.4
1/2"	42"	36"	<b>202-8-42</b>	171.00	1.9
1/2"	54"	48"	<b>202-8-54</b>	285.00	2.2
1/2"	66"	60"	<b>202-8-66</b>	309.00	2.7
9/16"	14"	8"	<b>202-9-14</b>	61.00	1.0
9/16"	18"	12"	<b>202-9-18</b>	70.00	1.1
9/16"	22"	16"	<b>202-9-22</b>	84.00	1.3
9/16"	28"	22"	<b>202-9-28</b>	102.00	1.5
5/8"	14"	8"	<b>202-10-14</b>	61.00	1.1
5/8"	18"	12"	<b>202-10-18</b>	71.00	1.3
5/8"	22"	16"	<b>202-10-22</b>	90.00	1.4
5/8"	28"	22"	<b>202-10-28</b>	107.00	1.6
11/16"	14"	8"	<b>202-11-14</b>	64.00	1.1
11/16"	22"	16"	<b>202-11-22</b>	93.00	1.6
3/4"	14"	8"	<b>202-12-14</b>	68.00	1.2
3/4"	18"	12"	<b>202-12-18</b>	80.00	1.5
3/4"	22"	16"	<b>202-12-22</b>	93.00	1.8
3/4"	28"	22"	<b>202-12-28</b>	127.00	2.0
13/16"	14"	8"	<b>202-13-14</b>	102.00	1.3
13/16"	22"	16"	<b>202-13-22</b>	120.00	1.9
27/32"	14"	8"	<b>202-13A-14</b>	102.00	1.3
27/32"	22"	16"	<b>202-13A-22</b>	120.00	1.9
7/8"	14"	8"	<b>202-14-14</b>	71.00	1.4
7/8"	18"	12"	<b>202-14-18</b>	85.00	1.8
7/8"	22"	16"	<b>202-14-22</b>	99.00	2.1
7/8"	28"	22"	<b>202-14-28</b>	128.00	2.6
1"	14"	8"	<b>202-16-14</b>	77.00	1.7
1"	18"	12"	<b>202-16-18</b>	93.00	2.2
1"	22"	16"	<b>202-16-22</b>	115.00	2.6
1"	28"	22"	<b>202-16-28</b>	133.00	3.1
1 1/8"	14"	8"	<b>202-18-14</b>	97.00	1.9
1 1/8"	22"	16"	<b>202-18-22</b>	119.00	3.1
1 1/8"	28"	22"	<b>202-18-28</b>	167.00	3.9
1 1/4"	14"	8"	<b>202-20-14</b>	113.00	2.3
1 1/4"	22"	16"	<b>202-20-22</b>	138.00	3.6
1 1/4"	28"	22"	<b>202-20-28</b>	193.00	4.3
1 3/8"	22"	16"	<b>202-22-22</b>	161.00	4.1
1 1/2"	14"	8"	<b>202-24-14</b>	133.00	2.9
1 1/2"	22"	16"	<b>202-24-22</b>	187.00	4.8
1 1/2"	28"	22"	<b>202-24-28</b>	291.00	6.2



## MULTIPLE CUTTER

## PYRAMID POINT®

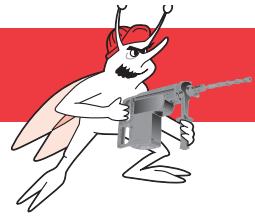
- Patented, new technology tip
- 5 Premium-grade carbide inserts
- Faster smoother drilling and longer lasting
- Precise hole location, easy start center point
- Heat-treated, shot-peened, superior steel
- Ultra-efficient dust removal flute design
- Available in longer lengths; call factory for a quote
- 42", 54", & 66" bits have 31" flute length and undercut body



POINT DIA.	OVERALL LENGTH	DRILLING DEPTH	PART NO.	LIST PRICE	WT. (lbs)
5/8"	14"	8"	<b>P202-10-14</b>	\$ 71.00	1.1
5/8"	18"	12"	<b>P202-10-18</b>	82.00	1.3
5/8"	22"	16"	<b>P202-10-22</b>	102.00	1.4
5/8"	32"	26"	<b>P202-10-32</b>	158.00	1.8
5/8"	42"	36"	<b>P202-10-42</b>	198.00	2.3
5/8"	54"	48"	<b>P202-10-54</b>	386.00	2.8
5/8"	66"	60"	<b>P202-10-66</b>	409.00	3.4
3/4"	14"	8"	<b>P202-12-14</b>	77.00	1.2
3/4"	18"	12"	<b>P202-12-18</b>	93.00	1.5
3/4"	22"	16"	<b>P202-12-22</b>	107.00	1.8
3/4"	32"	26"	<b>P202-12-32</b>	166.00	2.3
3/4"	42"	36"	<b>P202-12-42</b>	210.00	2.9
3/4"	54"	48"	<b>P202-12-54</b>	409.00	3.5
3/4"	66"	60"	<b>P202-12-66</b>	425.00	4.5
7/8"	14"	8"	<b>P202-14-14</b>	81.00	1.4
7/8"	18"	12"	<b>P202-14-18</b>	99.00	1.8
7/8"	22"	16"	<b>P202-14-22</b>	117.00	2.1
7/8"	32"	26"	<b>P202-14-32</b>	185.00	3.0
7/8"	42"	36"	<b>P202-14-42</b>	239.00	3.7
7/8"	54"	48"	<b>P202-14-54</b>	441.00	4.6
7/8"	66"	60"	<b>P202-14-66</b>	459.00	5.6
1"	14"	8"	<b>P202-16-14</b>	88.00	1.7
1"	18"	12"	<b>P202-16-18</b>	107.00	2.2
1"	22"	16"	<b>P202-16-22</b>	132.00	2.6
1"	32"	26"	<b>P202-16-32</b>	215.00	3.6
1"	42"	36"	<b>P202-16-42</b>	281.00	4.6
1"	54"	48"	<b>P202-16-54</b>	498.00	5.8
1"	66"	60"	<b>P202-16-66</b>	514.00	6.7
1 1/8"	14"	8"	<b>P202-18-14</b>	111.00	1.9
1 1/8"	22"	16"	<b>P202-18-22</b>	137.00	3.1
1 1/8"	32"	26"	<b>P202-18-32</b>	239.00	4.2
1 1/8"	42"	36"	<b>P202-18-42</b>	349.00	5.4
1 1/8"	54"	48"	<b>P202-18-54</b>	605.00	6.6
1 1/8"	66"	60"	<b>P202-18-66</b>	620.00	8.0
1 1/4"	14"	8"	<b>P202-20-14</b>	129.00	2.3
1 1/4"	22"	16"	<b>P202-20-22</b>	159.00	3.6
1 1/4"	32"	26"	<b>P202-20-32</b>	254.00	5.1
1 1/4"	42"	36"	<b>P202-20-42</b>	359.00	6.4
1 1/4"	54"	48"	<b>P202-20-54</b>	622.00	8.1
1 1/4"	66"	60"	<b>P202-20-66</b>	637.00	9.8
1 3/8"	22"	16"	<b>P202-22-22</b>	186.00	4.1
1 3/8"	32"	26"	<b>P202-22-32</b>	302.00	5.8
1 3/8"	42"	36"	<b>P202-22-42</b>	439.00	7.6
1 3/8"	54"	48"	<b>P202-22-54</b>	725.00	9.2
1 3/8"	66"	60"	<b>P202-22-66</b>	741.00	11.1
1 1/2"	14"	8"	<b>P202-24-14</b>	151.00	2.9
1 1/2"	22"	16"	<b>P202-24-22</b>	216.00	4.8
1 1/2"	32"	26"	<b>P202-24-32</b>	332.00	7.1
1 1/2"	42"	36"	<b>P202-24-42</b>	475.00	8.9
1 1/2"	54"	48"	<b>P202-24-54</b>	765.00	10.8
1 1/2"	66"	60"	<b>P202-24-66</b>	781.00	13.1



# FORGED HAMMER TOOLS



## SCALING CHISELS



Shank Style	Description	Part No.	List Price	Wt. (lbs)
SPLINE*	12" OAL X 2"	<b>SC-12S</b>	\$46.00	1.6
	12" OAL X 3"	<b>SC-312S</b>	77.00	2.3
	18" OAL X 2"	<b>SC-18S</b>	51.00	2.4
SDS-max	12" OAL X 2"	<b>SC-12MX</b>	49.00	1.6
	12" OAL x 3"	<b>SC-312MX</b>	77.00	2.5
	18" OAL X 2"	<b>SC-18MX</b>	57.00	2.4
	18" OAL X 3"	<b>SC-318MX</b>	96.00	2.3
	24" OAL X 2"	<b>SC-24MX</b>	117.00	2.6
	36" OAL X 2"	<b>SC-36MX</b>	136.00	4.0
SDS+	10" OAL X 1 1/2"	<b>SC-12DS</b>	46.00	0.8
3/4" Hex	12" OAL X 2"	<b>SC-12HX</b>	46.00	1.6
	12" OAL X 3"	<b>SC-312HX</b>	50.00	2.5

## COLD CHISELS



- Edging, chipping and channeling concrete, masonry or brick

Shank Style	Description	Part No.	List Price	Wt. (lbs)
SPLINE*	12" OAL X 1"	<b>CC-12S</b>	\$25.00	1.4
	18" OAL X 1"	<b>CC-18S</b>	36.00	2.3
SDS-max	12" OAL X 1"	<b>CC-12MX</b>	33.00	1.4
	18" OAL X 1"	<b>CC-18MX</b>	39.00	2.3
	24" OALX 1"	<b>CC-24MX</b>	87.00	2.6
	36" OALX 1"	<b>CC-36MX</b>	108.00	3.8
SDS+	10" OAL X 3/4"	<b>CC-12DS</b>	35.00	0.8
3/4" Hex	12" OAL X 1"	<b>CC-12HX</b>	25.00	1.4
	18" OAL X 1"	<b>CC-18HX</b>	33.00	2.3

## BULL POINTS or MOIL POINTS



- Breaking up concrete, brick, asphalt, etc.
- Light demolition applications
- Starting holes in concrete slabs

Shank Style	Description	Part No.	List Price	Wt. (lbs)
SPLINE*	12" OAL	<b>BP-12S</b>	\$25.00	1.4
	18" OAL	<b>BP-18S</b>	36.00	2.3
SDS-max	12" OAL	<b>BP-12MX</b>	31.00	1.4
	18" OAL	<b>BP-18MX</b>	37.00	2.3
	24" OAL	<b>BP-24MX</b>	88.00	2.6
	36" OAL	<b>BP-36MX</b>	109.00	3.9
SDS+	10" OAL	<b>BP-12DS</b>	35.00	0.8

## BUSHING TOOLS



- Roughing concrete surface prior to applying a surface finish

Shank Style	Description	Part No.	List Price	Wt. (lbs)
SPLINE*	1 pc Bushing Tool	<b>BT-16S</b>	\$122.00	2.6
SDS-max	1 pc Bushing Tool	<b>BT-16MX</b>	126.00	2.6
	16 Pt. Bushing Head	<b>BH-16</b>	51.00	1.1
SPLINE*	Bushing Head Shk	<b>BS-8S</b>	29.00	1.0
SDS-max	Bushing Head Shk	<b>BS-8MX</b>	34.00	1.0

Bushing tool head is 1 1/2" x 1 1/2"



## CARBIDE BUSHING TOOLS

SPLINE*	1 pc Bushing Tool	<b>BT-16CS</b>	\$365.00	3.0
SDS-max	1 pc Bushing Tool	<b>BT-16CMX</b>	371.00	3.0

Carbide Bushing Tools have 16 carbide points

Carbide bushing tool head is 1 1/2" x 1 1/2"

## CLAY SPADE



- Digging clay, dirt, hard-packed gravel, shale, etc.

Shank Style	Description	Part No.	List Price	Wt. (lbs)
SPLINE*	4 1/2" X 5 1/2" X 15 1/2"	<b>CS-S</b>	\$150.00	4.8
SDS-max	4 1/2" X 5 1/2" X 15 1/2"	<b>CS-MX</b>	154.00	4.2

## ASPHALT CUTTER



- Cutting asphalt or hard ground – not for concrete

Shank Style	Description	Part No.	List Price	Wt. (lbs)
SDS-max	3 1/2" X 4 1/2" X 15 1/2"	<b>AC-MX</b>	185.00	4.3

## GROUND ROD DRIVERS



- Driving electrical grounding rods into earth

Shank Style	Description	Part No.	List Price	Wt. (lbs)
SPLINE*	for 5/8" - 3/4" rebar	<b>DR-S</b>	\$126.00	1.1
SDS-max	for 5/8" - 3/4" rebar	<b>DR-MX</b>	132.00	1.1

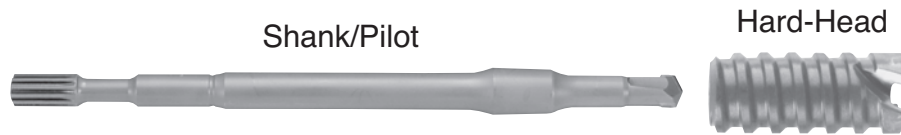


\* Please note! Spline Shank Hammer Iron will not have Splines on the Shank.

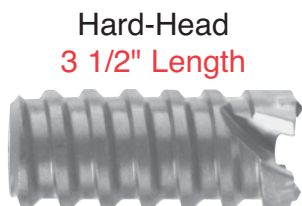


## SOLID-BODY "HARD-HEAD" BITS

Relton's "Hard-Head" bits are designed to bore large holes through concrete without the need to break out the core every few inches.



Slide the taper end of the shank into the "Hard-Head" bit. A slight twisting motion will help keep the bit from falling off before beginning the cut. The pilot is integrated on the shank, so drilling can be accomplished without interruption! Once used, shank and head become one piece.



Hard-Head  
3 1/2" Length

Head-only  
1 1/8" thru 1 5/8"

DIAMETER	PART NO.	LIST PRICE	WEIGHT (lbs)
1 1/8"	<b>SB-18</b>	\$167.00	0.7
1 1/4"	<b>SB-20</b>	173.00	0.8
1 1/2"	<b>SB-24</b>	180.00	1.3
1 5/8"	<b>SB-26</b>	192.00	1.4

SDS-max Shank/Pilot

SPLINE Shank/Pilot

SDS+ Shank/Pilot

For 1 1/8" thru 1 5/8" Heads

DRILLING DEPTH	SHANK STYLE	PART NO.	LIST PRICE	WEIGHT (lbs)
10"	SPLINE	<b>S02-10S</b>	\$ 59.00	1.8
	SDS-max	<b>SMX-10S</b>	72.00	1.7
	SDS+	<b>S07-10S</b>	59.00	0.9
18"	SPLINE	<b>S02-18S</b>	72.00	3.1
	SDS-max	<b>SMX-18S</b>	84.00	2.7
	SDS+	<b>S07-18S</b>	72.00	1.5
24"	SPLINE	<b>S02-24S</b>	84.00	3.9
	SDS-max	<b>SMX-24S</b>	97.00	3.6
	SDS+	<b>S07-24S</b>	84.00	1.9



Hard-Head  
3 1/2" Length

Head-only  
1 3/4" thru 3"

DIAMETER	PART NO.	LIST PRICE	WEIGHT (lbs)
1 3/4"	<b>SB-28</b>	\$ 198.00	1.4
2"	<b>SB-32</b>	212.00	1.9
2 1/2"	<b>SB-40</b>	244.00	3.4
3"	<b>SB-48</b>	276.00	5.4

SDS-max Shank/Pilot

SPLINE Shank/Pilot

For 1 3/4" thru 3" Heads

DRILLING DEPTH	SHANK STYLE	PART NO.	LIST PRICE	WEIGHT (lbs)
10"	SPLINE	<b>S02-10</b>	\$ 65.00	2.4
	SDS-max	<b>SMX-10</b>	77.00	2.4
18"	SPLINE	<b>S02-18</b>	77.00	3.8
	SDS-max	<b>SMX-18</b>	91.00	3.8
24"	SPLINE	<b>S02-24</b>	91.00	4.8
	SDS-max	<b>SMX-24</b>	102.00	4.8

### IMPORTANT INFORMATION

Once Relton's "Hard-Head" bits have been used, the tapered shank cannot be removed by conventional means.  
For shank removal, return to Relton Corporation.

## HAMMER CORE BITS

### CORE BODIES & STARTER POINTS



DIAMETER	PART NO.	LIST PRICE	WEIGHT (lbs)
1 3/4"	<b>CBT-28</b>	\$ 233.00	2.1
2"	<b>CBT-32</b>	245.00	2.7
2 1/2"	<b>CBT-40</b>	314.00	4.0
2 3/4"	<b>CBT-44</b>	341.00	4.5
3"	<b>CBT-48</b>	356.00	5.4
3 1/2"	<b>CBT-56</b>	451.00	7.0
4"	<b>CBT-64</b>	578.00	8.6
4 1/2"	<b>CBT-72</b>	661.00	10.1
5"	<b>CBT-80</b>	688.00	12.7

### SHANKS



#### SDS-max SHANK

DRILLING DEPTH	PART NO.	LIST PRICE	WEIGHT (lbs)
10"	<b>SMXTL-10</b>	\$ 82.00	1.8
18"	<b>SMXTL-18</b>	100.00	3.2
24"	<b>SMXTL-24</b>	118.00	4.3



#### SPLINE SHANK

DRILLING DEPTH	PART NO.	LIST PRICE	WEIGHT (lbs)
10"	<b>S02TL-10</b>	\$ 82.00	1.8
18"	<b>S02TL-18</b>	100.00	3.2
24"	<b>S02TL-24</b>	118.00	4.3

### REPLACEMENT PARTS



#### CORE BODIES ONLY

DIAMETER	PART NO.	LIST PRICE	WEIGHT (lbs)
1 3/4"	<b>CBT-28HO</b>	\$ 193.00	1.8
2"	<b>CBT-32HO</b>	205.00	2.4
2 1/2"	<b>CBT-40HO</b>	274.00	3.7
2 3/4"	<b>CBT-44HO</b>	301.00	4.4
3"	<b>CBT-48HO</b>	316.00	4.9
3 1/2"	<b>CBT-56HO</b>	411.00	6.3
4"	<b>CBT-64HO</b>	532.00	7.8
4 1/2"	<b>CBT-72HO</b>	615.00	9.3
5"	<b>CBT-80HO</b>	642.00	11.2



#### STARTER POINTS ONLY

DIAMETER	PART NO.	LIST PRICE	WEIGHT (lbs)
1 3/4"	<b>CBSP-28</b>	\$ 40.00	0.4
2"	<b>CBSP-32</b>	40.00	0.6
2 1/2"	<b>CBSP-40</b>	40.00	0.6
2 3/4"	<b>CBSP-44</b>	40.00	0.8
3"	<b>CBSP-48</b>	40.00	0.9
3 1/2"	<b>CBSP-56</b>	40.00	0.9
4"	<b>CBSP-64</b>	46.00	0.9
4 1/2"	<b>CBSP-72</b>	46.00	1.1
5"	<b>CBSP-80</b>	46.00	1.1

## 3 Components... (Once the hammer core bit has been used, the shank and core bit become a one-piece system)

### 1. TAPER FIT SHANK



SPLINE or SDS-max Shank  
(other shank styles & lengths  
available on request)

### 2. HEAVY-DUTY CORE BIT



6" Body Length  
4-1/2" Core Depth  
Carbide teeth can be replaced or sharpened.

### 3. STARTER POINT



Heat-Treated, Spring-Loaded

- No stress points • Easy pilot removal
- Tapered Shank • No knock-out hole for pilot
- Extra-thick core body wall • Extra-length core body • Core Bits milled from solid steel

## STRAIGHT-SHANK MASONRY DRILL BITS

DIAMETER		OVERALL LENGTH	DRILLING DEPTH	PART NO.	LIST PRICE	Wt. (lbs)
POINT	SHANK					
1/8"	1/8"	3"	1 7/8"	RT-2-3*	\$4.00	0.1
5/32"	3/16"	4"	2 3/8"	RT-1-4	8.00	0.1
11/64"	11/64"	3"	1 7/8"	RT-1-3*	8.00	0.1
3/16"	3/16"	3"	1 7/8"	RT-3-3*	5.00	0.1
3/16"	3/16"	4"	2 3/8"	RT-3-4*	6.00	0.1
3/16"	3/16"	6"	4 1/2"	RT-3-6*	8.00	0.1
3/16"	3/16"	8"	6"	RT-3-8*	10.00	0.1
7/32"	1/4"	6"	4"	RT-2-6	8.00	0.1
7/32"	1/4"	8 1/2"	6 1/2"	RT-2-8*	10.00	0.1
1/4"	1/4"	4"	2 1/4"	RT-4-4*	7.00	0.1
1/4"	1/4"	6"	3 3/4"	RT-4-6*	8.00	0.1
1/4"	1/4"	8"	6"	RT-4-8*	13.00	0.1
1/4"	1/4"	12"	10"	RT-4-12	16.00	0.2
1/4"	1/4"	18"	16"	RT-4-18	27.00	0.3
1/4"	1/4"	24"	22"	RT-4-24	33.00	0.4
5/16"	1/4"	4"	2 1/2"	RT-5-4*	9.00	0.1
5/16"	1/4"	6"	4"	RT-5-6*	9.50	0.1
5/16"	1/4"	12"	10"	RT-5-12	19.00	0.3
5/16"	1/4"	18"	16"	RT-5-18	28.00	0.4
3/8"	3/8"	4"	2 1/2"	RT-6-4*	10.00	0.2
3/8"	1/4"	4"	2 1/2"	RT-6-4A	10.00	0.1
3/8"	3/8"	6"	4"	RT-6-6*	11.00	0.2
3/8"	1/4"	6"	4"	RT-6-6A*	11.00	0.2
3/8"	3/8"	12"	10"	RT-6-12	21.00	0.4
3/8"	3/8"	18"	16"	RT-6-18	28.00	0.5
3/8"	3/8"	24"	22"	RT-6-24	38.00	0.7
7/16"	3/8"	4"	2 1/2"	RT-7-4*	10.50	0.2
7/16"	3/8"	6"	4"	RT-7-6*	11.50	0.3
7/16"	3/8"	18"	16"	RT-7-18	36.00	0.6
1/2"	3/8"	4"	2 1/2"	RT-8-4*	11.00	0.2
1/2"	3/8"	6"	4"	RT-8-6*	12.00	0.3
1/2"	1/4"	6"	4"	RT-8-6A*	12.00	0.3
1/2"	3/8"	14"	12"	RT-8-14	26.00	0.6
1/2"	3/8"	18"	16"	RT-8-18	36.00	0.7
1/2"	3/8"	24"	22"	RT-8-24	42.00	0.9
9/16"	3/8"	6"	4"	RT-9-6*	15.00	0.3
5/8"	1/2"	6"	4"	RT-10-6*	17.00	0.4
5/8"	1/2"	14"	12"	RT-10-14	29.00	0.8
5/8"	1/2"	18"	16"	RT-10-18	41.00	1.1
5/8"	1/2"	24"	22"	RT-10-24	46.00	1.3
11/16"	1/2"	6"	4"	RT-11-6*	20.00	0.4
3/4"	1/2"	6"	4"	RT-12-6*	22.00	0.5
3/4"	1/2"	14"	12"	RT-12-14	37.00	1.0
3/4"	1/2"	18"	16"	RT-12-18	44.00	1.5
3/4"	1/2"	24"	22"	RT-12-24	50.00	1.8
7/8"	1/2"	6"	4"	RT-14-6	29.00	0.6
7/8"	1/2"	14"	12"	RT-14-14	41.00	1.3
1"	1/2"	6"	4"	RT-16-6	35.00	0.8
1"	1/2"	18"	16"	RT-16-18	64.00	2.4
1"	1/2"	24"	22"	RT-16-24	73.00	3.1



## ROTARY/PERCUSSION

## RAM TIP™

## PROFESSIONAL MASONRY BITS

Relton's **premium** straight-shank masonry bit is designed for use in lightweight, rotating-vibrating hammers, but it can be used equally well in standard drill motors as a rotary bit.

A special hard, tough carbide cutter is precisely located for maximum support and strength.

Shank diameters 3/8" and larger have 3 flats on the shank to reduce the possibility of slipping in the chuck.

*All RT bits are available in GRT® style, See page 12 for additional information.*

### RAM TIP™ STRAIGHT SHANK 5-PIECE BIT KIT



Refillable Case  
Contains: 3/16" x 6"  
1/4" x 6"  
5/16" x 6"  
3/8" x 6"  
1/2" x 6"

## RAM-TIP™

PART NO.	LIST PRICE	WT. (lbs)
RT-K5	\$ 49.00	0.7

**\* 25 pc. quantities available in bulk packaging**

To order bulk, use prefix "B" before part number. Example: **BRT-8-6**



## STRAIGHT-SHANK MASONRY DRILL BITS



**Groo-V Tip®**  
multi-purpose bit

tile† • hard metal • plastic • wood • marble† • granite† • masonry

DIAMETER		OVERALL LENGTH	DRILLING DEPTH	PART NO.	LIST PRICE	WEIGHT (lbs)
POINT	SHANK					
1/8"	1/8"	3"	1 7/8"	<b>GRT-2-3*</b>	\$10.00	0.1
5/32"	3/16"	4"	2 3/8"	<b>GRT-1-4*</b>	11.00	0.1
11/64"	11/64"	3"	1 7/8"	<b>GRT-1-3</b>	11.00	0.1
3/16"	3/16"	3"	1 7/8"	<b>GRT-3-3*</b>	11.00	0.1
3/16"	3/16"	4"	2 3/8"	<b>GRT-3-4*</b>	12.00	0.1
3/16"	3/16"	6"	4 1/2"	<b>GRT-3-6*</b>	13.00	0.1
3/16"	3/16"	8"	6"	<b>GRT-3-8*</b>	14.00	0.1
7/32"	1/4"	6"	4"	<b>GRT-2-6</b>	14.00	0.1
1/4"	1/4"	4"	2 1/4"	<b>GRT-4-4*</b>	12.00	0.1
1/4"	1/4"	6"	3 3/4"	<b>GRT-4-6*</b>	13.00	0.1
1/4"	1/4"	8"	6"	<b>GRT-4-8*</b>	17.00	0.1
5/16"	1/4"	4"	2 1/2"	<b>GRT-5-4*</b>	15.00	0.1
5/16"	1/4"	6"	4"	<b>GRT-5-6*</b>	16.00	0.2
3/8"	3/8"	4"	2 1/2"	<b>GRT-6-4*</b>	16.00	0.1
3/8"	3/8"	6"	4"	<b>GRT-6-6*</b>	17.00	0.2
3/8"	3/8"	12"	10"	<b>GRT-6-12</b>	32.00	0.3
7/16"	3/8"	4"	2"	<b>GRT-7-4</b>	20.00	0.1
7/16"	3/8"	6"	4"	<b>GRT-7-6</b>	22.00	0.3
1/2"	3/8"	6"	4"	<b>GRT-8-6*</b>	21.00	0.3
9/16"	3/8"	6"	4"	<b>GRT-9-6</b>	29.00	0.4
5/8"	1/2"	6"	4"	<b>GRT-10-6</b>	30.00	0.4
11/16"	1/2"	6"	4"	<b>GRT-11-6</b>	35.00	0.4
3/4"	1/2"	6"	4"	<b>GRT-12-6</b>	37.00	0.5
7/8"	1/2"	6"	4"	<b>GRT-14-6</b>	48.00	0.6
1"	1/2"	6"	4"	<b>GRT-16-6</b>	63.00	0.8

Groo-V Tip® and GRT® are registered trademarks of Relton Corporation

†Because of the differing densities of these materials, the number of holes may vary. Slow drilling speeds are recommended, and in some cases, marble and granite may not be drillable with carbide tools.

Percussion or rotary-only, the Groo-V Tip® bit makes holes in almost *all* materials! Engineered for drilling hard materials, these specialized Ram Tip™ Bits have a *serrated* carbide tip, which penetrates faster - up to *50% faster* than standard masonry bits! (A drill-press-supported drill motor is recommended for drilling hard metal.)

### Groo-V Tip® MULTI-PURPOSE 5-PIECE BIT KIT



Refillable Case  
Contains: 3/16" x 6"  
1/4" x 6"  
5/16" x 6"  
3/8" x 6"  
1/2" x 6"

**Groo-V Tip®**

PART NO.	LIST PRICE	WT. (lbs)
<b>GRT-K5</b>	\$ 75.00	0.7

\* 25 pc. quantities available in bulk packaging

To order bulk, use prefix "B" before part number.

Example: **BGRT-3-6**

## SCREW-TYPE ANCHOR BITS



TC bits meet or exceed all specifications established by manufacturers of screw-type masonry anchors.

Recommended for use with Tapcon® anchors or other screw-type anchors requiring 5/32" or 3/16" tip diameters.

All TC size are available in 100 pc. bulk packaging

To order bulk, use prefix "B" before part number Example: **BTC-3-5**

FOR THESE ANCHORS	USE THESE SIZE RELTON SCREW-TYPE MASONRY BIT	PART NO.	LIST PRICE		Wt. (lbs)	
					TUBE	BULK
3/16" X 1 1/4"	5/32" DIA X 3-1/2" LGTH	<b>TC-5-3</b>	\$5.30	ALL RELTON TC BITS ARE PACKED 10 PER TUBE	0.3	3
3/16" X 1 3/4"					0.3	3
3/16" X 2 1/4"					0.3	3
3/16" X 2 3/4"					0.3	3
3/16" X 3 1/4"					0.3	3
3/16" X 3 3/4"	5/32" DIA X 5-1/2" LGTH	<b>TC-5-5</b>	6.30	BULK QTY 100 PER SIZE	0.3	3
3/16" X 4"					0.3	3
1/4" X 1 1/4"					0.3	3
1/4" X 1 3/4"					0.3	3
1/4" X 2 1/4"					0.3	3
1/4" X 2 3/4"	3/16" DIA X 4-1/2" LGTH	<b>TC-3-4</b>	5.80		0.3	3
1/4" X 3 1/4"					0.3	3
1/4" X 3 3/4"					0.3	3
1/4" X 4"					0.3	3
1/4" X 4"					0.3	3
1/4" X 3 1/4"	3/16" DIA X 5-1/2" LGTH	<b>TC-3-5</b>	6.30		0.3	3
1/4" X 3 3/4"					0.3	3
1/4" X 4"					0.3	3



## STRAIGHT-SHANK MASONRY DRILL BITS



### ROTARY/PERCUSSION R4X™ MASONRY BITS

The special cold-forged process used to produce R4X™ Bits produces a drill of exceptional strength at a reduced cost.

DIAMETER		OVERALL LENGTH	DRILLING DEPTH	PART NO.	LIST. PRICE	WT. (lbs)
POINT	SHANK					
1/8"	1/8"	3"	1 3/4"	<b>RX-2-3*</b>	\$ 4.00	0.1
5/32"	3/16"	4"	2 3/8"	<b>RX-1-4</b>	3.20	0.1
3/16"	3/16"	4"	2 1/2"	<b>RX-3-4*</b>	3.40	0.1
1/4"	1/4"	4"	2 1/2"	<b>RX-4-4*</b>	3.90	0.1
1/4"	1/4"	6"	4"	<b>RX-4-6*</b>	5.00	0.1
1/4"	1/4"	12"	10"	<b>RX-4-12</b>	12.60	0.2
5/16"	1/4"	4"	2 1/2"	<b>RX-5-4*</b>	5.00	0.1
5/16"	1/4"	6"	4"	<b>RX-5-6*</b>	5.60	0.1
5/16"	1/4"	12"	10"	<b>RX-5-12</b>	12.60	0.2
3/8"	1/4"	4"	2 1/2"	<b>RX-6-4*</b>	5.10	0.1
3/8"	1/4"	6"	4"	<b>RX-6-6*</b>	6.90	0.1
3/8"	3/8"	12"	10"	<b>RX-6-12</b>	15.80	0.3
7/16"	1/4"	4"	2 1/2"	<b>RX-7-4</b>	7.90	0.2
7/16"	1/4"	6"	4"	<b>RX-7-6</b>	8.90	0.2
1/2"	1/4"	4"	2 1/2"	<b>RX-8-4*</b>	7.50	0.2
1/2"	1/4"	6"	4"	<b>RX-8-6A*</b>	9.00	0.3
1/2"	3/8"	6"	4"	<b>RX-8-6*</b>	9.00	0.3
1/2"	3/8"	12"	10"	<b>RX-8-12</b>	16.80	0.4
9/16"	3/8"	6"	4"	<b>RX-9-6</b>	11.60	0.3
5/8"	1/2"	6"	4"	<b>RX-10-6</b>	12.20	0.3
5/8"	1/2"	12"	10"	<b>RX-10-12</b>	21.00	0.6
11/16"	1/2"	6"	4"	<b>RX-11-6</b>	16.80	0.4
3/4"	1/2"	6"	4"	<b>RX-12-6</b>	17.00	0.4
3/4"	1/2"	12"	10"	<b>RX-12-12</b>	28.50	0.9
7/8"	1/2"	6"	4"	<b>RX-14-6</b>	19.00	0.6
7/8"	1/2"	12"	10"	<b>RX-14-12</b>	31.50	1.1
1"	1/2"	6"	4"	<b>RX-16-6</b>	27.50	0.7
1"	1/2"	12"	10"	<b>RX-16-12</b>	43.50	1.4

\* 25 pc. quantities available in bulk packaging

To order bulk, use prefix "B" before part number. Example: **BRX-8-6**



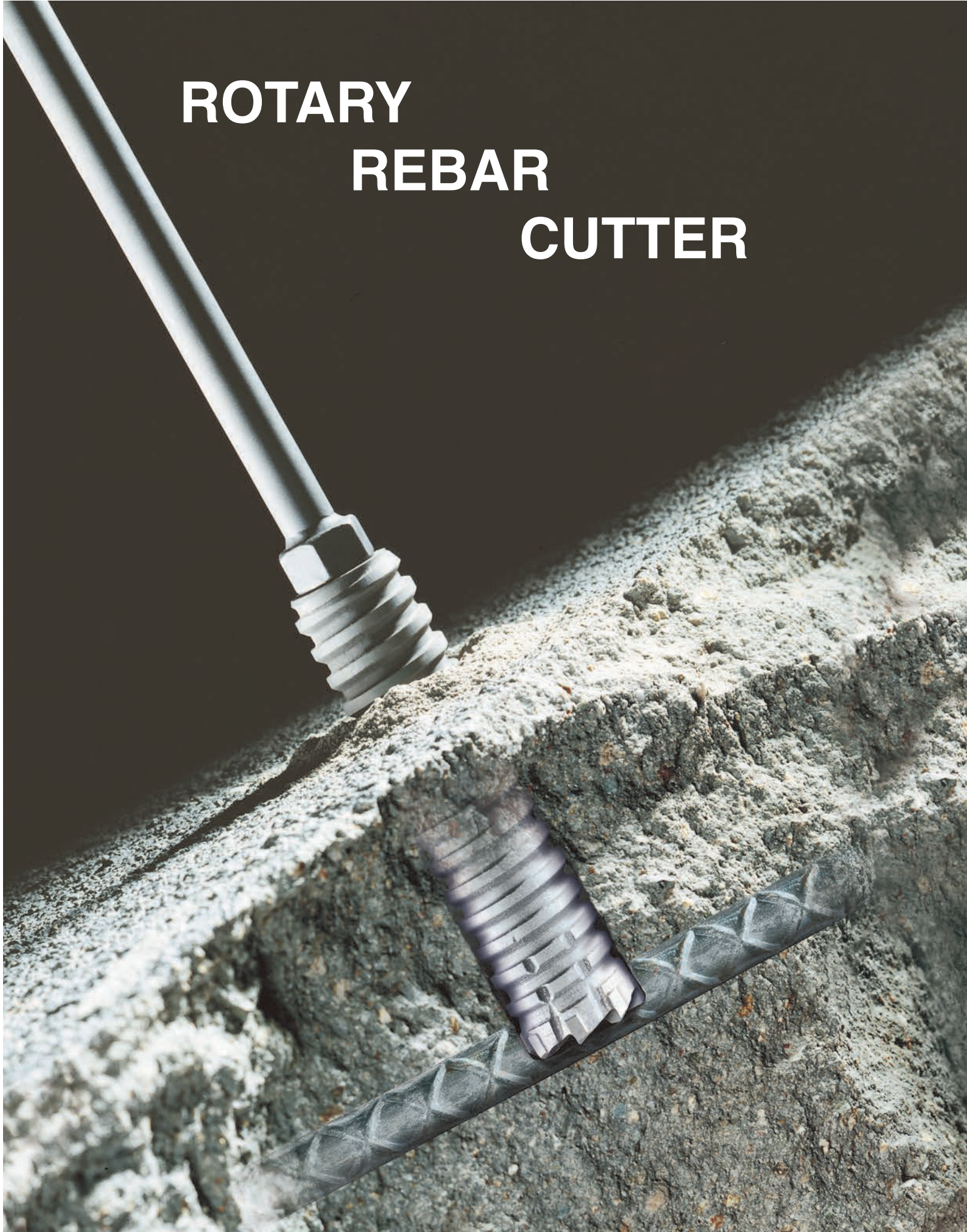
### ROTARY-ONLY TIP-TOP™ FAST SPIRAL MASONRY BITS

For the professional or the home-user, TIP-TOP™ bits are recommended for drilling in all types of masonry.

The fast spiral and the special carbide cutter assure fast penetration with minimal pressure.

DIAMETER		OVERALL LENGTH	DRILLING DEPTH	PART NO.	LIST PRICE	Wt. (lbs)
POINT	SHANK					
1/8"	1/8"	3"	1 3/4"	<b>TT-2-3</b>	\$ 4.00	0.1
3/16"	3/16"	4"	2 1/2"	<b>TT-3-4</b>	5.00	0.1
1/4"	1/4"	4"	2 1/2"	<b>TT-4-4</b>	6.00	0.1
1/4"	1/4"	6"	4"	<b>TT-4-6</b>	8.00	0.1
1/4"	1/4"	12"	10"	<b>TT-4-12</b>	16.00	0.3
1/4"	1/4"	18"	16"	<b>TT-4-18</b>	26.00	0.3
5/16"	1/4"	4"	2 1/2"	<b>TT-5-4</b>	9.00	0.1
5/16"	1/4"	6"	4"	<b>TT-5-6</b>	10.00	0.1
5/16"	5/16"	18"	16"	<b>TT-5-18</b>	30.00	0.4
3/8"	1/4"	4"	2 1/2"	<b>TT-6-4</b>	10.00	0.1
3/8"	1/4"	6"	4"	<b>TT-6-6</b>	11.00	0.1
3/8"	3/8"	18"	16"	<b>TT-6-18</b>	33.00	0.6
3/8"	1/4"	24"	22"	<b>TT-6-24</b>	42.00	0.8
7/16"	1/4"	4"	2 1/2"	<b>TT-7-4</b>	11.00	0.2
7/16"	1/4"	6"	4"	<b>TT-7-6</b>	12.00	0.2
1/2"	1/4"	4"	2 1/2"	<b>TT-8-4</b>	11.00	0.2
1/2"	3/8"	6"	4"	<b>TT-8-6</b>	12.00	0.3
1/2"	1/4"	6"	4"	<b>TT-8-6A</b>	12.00	0.3
9/16"	3/8"	6"	4"	<b>TT-9-6</b>	14.00	0.3
5/8"	1/2"	6"	4"	<b>TT-10-6</b>	16.00	0.3
11/16"	1/2"	6"	4"	<b>TT-11-6</b>	19.00	0.4
3/4"	1/2"	6"	4"	<b>TT-12-6</b>	21.00	0.4
7/8"	1/2"	6"	4"	<b>TT-14-6</b>	27.00	0.8
1"	1/2"	6"	4"	<b>TT-16-6</b>	33.00	0.7

# ROTARY REBAR CUTTER





# ROTARY-ONLY REBAR CUTTERS

At last, the answer to drilling through concrete-embedded rebar! No more broken or shattered hammer bits; now you can drill through the rebar and not have to relocate the hole to avoid the rebar!

DIA	OVERALL LENGTH	Straight-Shank		SDS+ Shank		WT. (lbs)	SUGGESTED RPM'S	PIECES
		PART NO.	LIST PRICE	PART NO.	LIST PRICE			
3/8"	8"	RB-6	\$ 59.00	SRB-6	\$61.00	0.3	850-1200	This is a <b>one-piece</b> system  (shanks are non-removable).
3/8"	12"	RB-6-12	78.00	SRB-6-12	79.00	0.3	850-1200	
3/8"	18"	RB-6-18	90.00	SRB-6-18	93.00	0.5	850-1200	
7/16"	12"	RB-7	71.00	SRB-7	73.00	0.5	850-1200	
1/2"	12"	RB-8	61.00	SRB-8	64.00	0.6	850-1200	
1/2"	18"	RB-8-18	92.00	SRB-8-18	95.00	1.0	850-1200	
9/16"	12"	RB-9	71.00	SRB-9	73.00	0.7	850-1200	
9/16"	18"	RB-9-18	97.00	SRB-9-18	99.00	1.1	850-1200	
5/8"	12"	RB-10	74.00	SRB-10	76.00	0.8	750-1000	
5/8"	18"	RB-10-18	99.00	SRB-10-18	101.00	1.3	750-1000	
11/16"	12"	RB-11	84.00	SRB-11	86.00	0.9	750-1000	
3/4"	12"	RB-12	85.00	SRB-12	87.00	1.1	600-850	This is a <b>two-piece</b> system, and comes with a shank to make an overall length of 12"; however, longer or shorter shanks are available...see shanks below
3/4"	18"	RB-12-18	109.00	SRB-12-18	111.00	1.6	600-850	
3/4"	24"	RB-12-24	125.00	SRB-12-24	127.00	1.8	600-850	
13/16"	12"	RB-13	92.00	SRB-13	95.00	1.1	600-850	
7/8"	12"	RB-14	118.00	SRB-14	121.00	0.9	600-850	
1"	12"	RB-16	123.00	SRB-16	126.00	1.1	500-750	
1 1/8"	12"	RB-18	145.00	SRB-18	148.00	1.2	500-750	
1 1/4"	12"	RB-20	152.00	SRB-20	155.00	1.3	450-600	
1 3/8"	12"	RB-22	154.00	SRB-22	157.00	1.4	450-600	
1 1/2"	12"	RB-24	169.00	SRB-24	172.00	1.6	350-500	
1 5/8"	12"	RB-26	206.00	SRB-26	209.00	1.7	350-500	
1 3/4"	12"	RB-28	213.00	SRB-28	216.00	1.8	350-500	
2"	12"	RB-32	240.00	SRB-32	244.00	2.5	350-500	
2 1/2"	12"	RB-40	260.00	SRB-40	264.00	3.1	350-500	

STRAIGHT SHANK



SDS+ SHANK



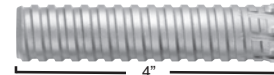
REPLACEMENT SHANKS 7/8" &amp; LARGER



STRAIGHT SHANK

SDS+ SHANK

REPLACEMENT CUTTER HEAD 7/8" &amp; LARGER



PART NO.	LIST PRICE	SHANK	LENGTH	WT. (lbs)	THREAD SIZE	DIA	PART NO.	LIST PRICE	WT. (lbs)	SUGGESTED RPM'S	THREAD SIZE
TDS-2-9	\$18.00	1/2"	5"	0.4	1/2-13 MALE	7/8"	RB-14HO	\$ 98.00	0.4	600-850	1/2-13 FEMALE
TDS-2-12*	20.00	1/2"	8"	0.5		1"	RB-16HO	103.00	0.6	500-750	
TDS-2-18	28.00	1/2"	14"	0.9		1 1/8"	RB-18HO	125.00	0.7	500-750	
TDS-2-24	38.00	1/2"	20"	1.2		1 1/4"	RB-20HO	132.00	0.8	450-600	
STDS-2-9	21.00	SDS+	5"	0.4		1 3/8"	RB-22HO	134.00	0.9	450-600	
STDS-2-12*	23.00	SDS+	8"	0.5		1 1/2"	RB-24HO	149.00	1.1	350-500	
STDS-2-18	31.00	SDS+	14"	0.9		1 5/8"	RB-26HO	186.00	1.2	350-500	
STDS-2-24	41.00	SDS+	20"	1.2		1 3/4"	RB-28HO	193.00	1.3	350-500	
TDS-3-9	24.00	1/2"	5"	0.4	3/4-10 MALE	2"	RB-32HO	214.00	1.8	350-500	3/4-10 FEMALE
TDS-3-12*	26.00	1/2"	8"	0.5							
TDS-3-18	36.00	1/2"	14"	0.9		2 1/2"	RB-40HO	234.00	2.4	350-500	
TDS-3-24	50.00	1/2"	20"	1.2							
STDS-3-9	27.00	SDS+	5"	0.4							
STDS-3-12*	30.00	SDS+	8"	0.5							
STDS-3-18	40.00	SDS+	14"	0.9							
STDS-3-24	55.00	SDS+	20"	1.2							

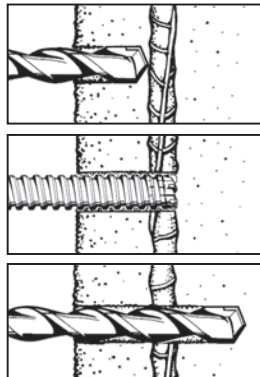
Follow power tool manufacturers' recommendations for bit capacity.

\*Supplied with complete bit.

**SAFETY NOTE:** The operator of this tool assumes sole responsibility for any adverse structural effects of cutting rebar. Consult structural engineers if you have any concerns

## EASY AS....

- When rebar is encountered while drilling with a rotary hammer and a carbide hammer bit, immediately stop the hammer and remove the bit from the hole (failure to stop could severely damage a carbide hammer bit - regardless of manufacturer's claim).
- Mount a rotary rebar cutter in a standard 1/2" chuck/drill motor or SDS+ rotary hammer-motor (with the selector in the **rotary-only** position); insert the rotary rebar cutter into the hole and drill through the embedded rebar.
- Remove the rotary rebar cutter after the rebar has been drilled completely through and finish drilling the hole with the rotary hammer and hammer bit.

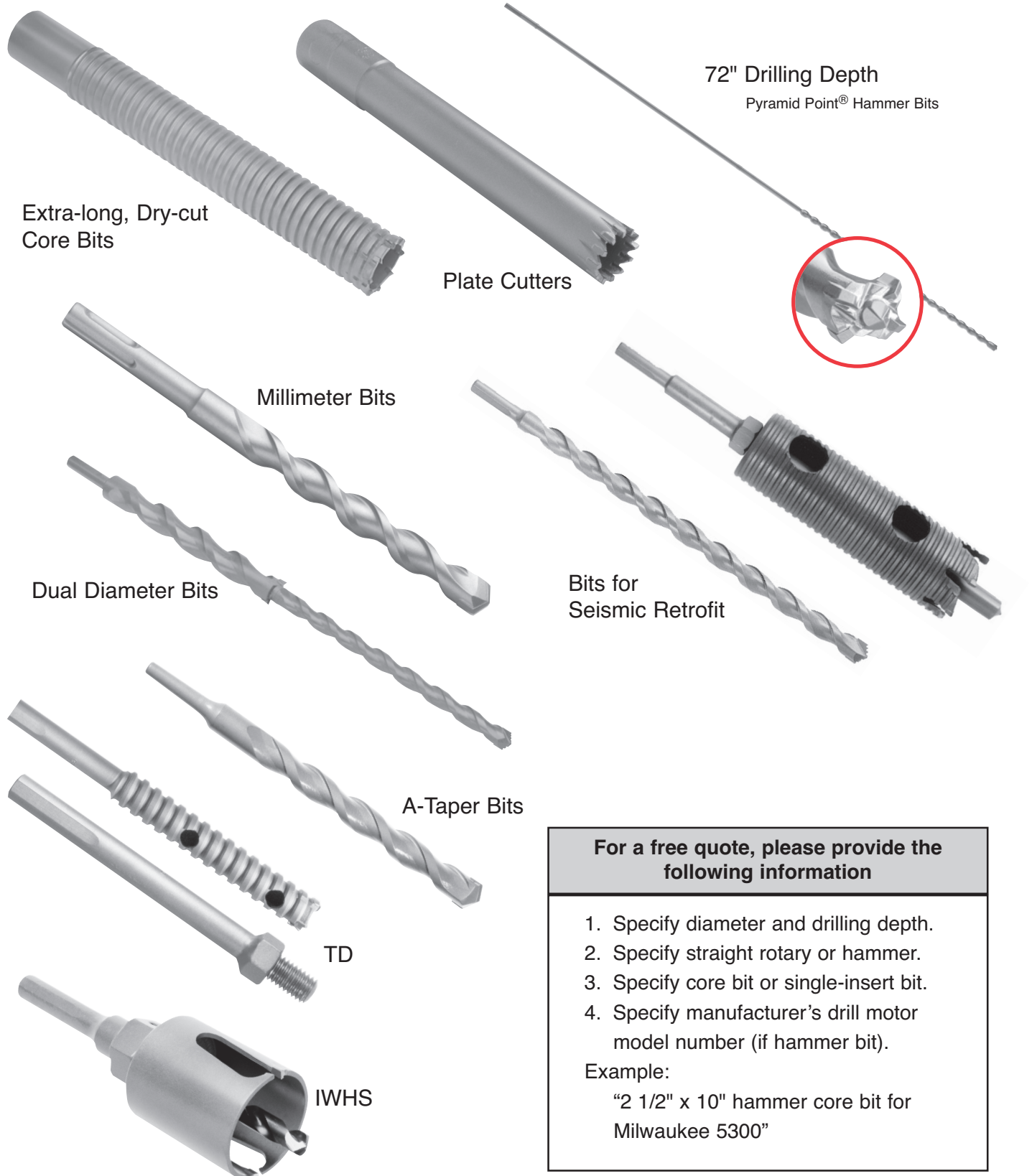


## NOTICE:

The Relton carbide-tipped rotary rebar cutter is designed for use in a standard 1/2" chuck/drill motor or SDS+ hammer motor provided the selector mechanism is kept in the **rotary-only** position. The Relton carbide-tipped rotary rebar cutter is intended for **rotary** drilling only; percussion (hammering action) will damage the tool.

## SPECIALTY CARBIDE BITS

Relton can manufacture special diameters and lengths for most of our products. We will manufacture custom designs to your blueprints or other specifications, even in 1 piece quantities. If you don't see what you need, just ask us to make it for you!





# FACTORY SERVICE SCHEDULE

## HAMMER BITS

DIAMETER	SHARPEN ONLY		REPLACE CARBIDE		REMILL*
	SINGLE	PYRAMID	SINGLE	PYRAMID	
1/4" thru 7/16"	\$ 6.50	-	-	-	-
1/2" thru 5/8"	6.50	\$ 11.50	\$ 18.00	\$ 28.00	\$ 21.00
11/16" thru 3/4"	7.50	11.50	18.00	28.00	22.00
27/32"	7.50	-	18.00	-	22.00
7/8" thru 1"	7.50	11.50	22.00	35.00	27.00
1 1/8" thru 1 1/4"	8.50	15.00	32.00	43.00	37.00
1 3/8"	8.50	15.00	32.00	52.00	38.00
1 1/2"	9.50	15.00	37.00	52.00	42.00

\* Note: Pyramid Point® multiple-cutter bits can be remilled ONLY AS SINGLE-CUTTER BITS.

Relton offers a complete rebuilding service for all our Carbide-Tipped Masonry Tools.

- To replace carbide, slots for carbide inserts must be usable.
- Remill means to cut off bit tip, cut new slots, insert carbide and sharpen.
- Customer is responsible for all shipping charges.

Sorry, we service only **Relton** products.

**SEND YOUR DULL OR BROKEN  
RELTON BITS OR HOLE SAWS TO:  
RELTON CORPORATION**

317 Rolyn Place  
Arcadia, CA 91007-2838  
Tel (800) 423-1505, Fax (626) 446-9671

## ROTARY REBAR CUTTERS & ROTARY CORE BITS

DIAMETER	SHARPEN ONLY	REPLACE CARBIDE & SHARPEN
1/2" thru 11/16"	\$ 10.00	\$ 6.50 each carbide + \$ 10.00 sharpen
3/4" thru 1 3/4"	11.00	6.50 each carbide + 11.00 sharpen
1 7/8" thru 2 3/4"	13.00	6.50 each carbide + 13.00 sharpen
3" thru 4"	17.00	6.50 each carbide + 17.00 sharpen

## HAMMER CORE BITS & HARD-HEAD BITS

DIAMETER	SHARPEN ONLY	REPLACE CARBIDE & SHARPEN
1 1/8" thru 1 3/8"	\$ 10.00	\$ 7.50 each carbide + \$ 10.00 sharpen
1 1/2"	11.00	7.50 each carbide + 11.00 sharpen
1 5/8" thru 1 3/4"	11.00	7.50 each carbide + 11.00 sharpen
2" thru 2 1/4"	12.00	7.50 each carbide + 12.00 sharpen
2 1/2" thru 2 3/4"	12.00	7.50 each carbide + 12.00 sharpen
3"	13.00	7.50 each carbide + 13.00 sharpen
3 1/2"	13.00	7.50 each carbide + 13.00 sharpen
4"	15.00	7.50 each carbide + 15.00 sharpen
4 1/2"	16.00	7.50 each carbide + 16.00 sharpen
5"	17.00	7.50 each carbide + 17.00 sharpen

## SUGGESTIONS FOR EXTENDING BIT LIFE

1. If possible, avoid hitting rebar or other impenetrable obstacles embedded in the concrete. Rebar is the number one enemy of hammer bits. When rebar is unavoidably encountered, we recommend using our rotary rebar cutter (see page 15).

2. Once drilling has begun, avoid trying to realign an off-center hole or change directions in a hole.

3. If the drill bit seems to slow down in its penetration rate, it is usually an indication that the carbide tip is getting dull. Continuing to drill with a dull bit will reduce bit life.

4. Pouring water into a hole as a dust settler while drilling may cause complete failure of the carbide tip.

5. Apply enough pressure to keep the bit firmly seated in the hammer.

6. Do not drill deeper than the length of the flutes. (This suggestion would not apply to multiple-cutter core bits in which the body diameter substantially exceeds the shank diameter.)

7. Frequent bit withdrawal from the hole will help to clean out dust and lessen the chance of the bit binding in the hole. This is particularly important when drilling damp or soft material.

8. Excessive force to remove a bound-up bit will cause bending or breakage.

9. Keep the shank of the bit clean and well lubricated.

10. Keep each bit in its own container. This will prevent accidental damage through handling while the bit is not being used.

11. A worn nose-piece in your hammer drill can result in abnormal bit-shank wear.

12. Before drilling 36" deep or deeper, use a shorter bit to drill a pilot hole 16" to 22".

### NOTE

Premature bit failure is usually the result of misuse, operator error, or job-site conditions. Pipe-wrench marks on a bit usually indicate bit misuse.

# HOLE SAW DIVISION



# BRAZED-CARBIDE HOLE SAWS

## Hole Saw Systems

Relton has been manufacturing high quality brazed-carbide hole saws in the U.S.A. for over 50 years. Each hole saw has actual carbide teeth brazed into the steel body. Different applications require different hole saws. Each series is engineered to cut a specific material. All can be used dry or wet, hand-held or in a stationary drill. All can be re-sharpened or have teeth replaced as needed. Relton manufactures custom sizes (even in one-piece quantities) in most diameters or drilling depths. For factory service or special-order information, please see page 22.

If your job requires a large number of holes, **lower your cost per hole with a Relton hole saw!** If you burn up high-speed hole saws, or if bi-metal hole saws aren't tough enough, Relton is for you.

### HARD PLASTIC/STUCCO ISHS SERIES



#### 2" Drilling Depth Standard

Complete Saw includes:

- Hole saw cutter head
- Shank (HS-S4 or HS-S6)
- Pilot (Carbide tipped)
- Spring

Will cut:

Clay Pipe, Hardy Board  
Dry Lath & Plaster / Stucco  
Wood with Nails  
Aluminum Siding  
Hard or Composite Plastic

DIAMETER	COMPLETE			CUTTER-HEAD ONLY			REPLACEMENT SHANKS		REPLACEMENT PILOTS/SPRINGS		
	PART NO.	LIST PRICE	WT. (lbs)	PART NO.	LIST PRICE	WT. (lbs)	PART NO.	LIST PRICE	PART NO.	LIST PRICE	WT. (lbs)
1"	ISHS-16	\$90.00	0.7	ISHS-16HO	\$62.00	0.3	HS-S4 \$15.00 (Supplied w/ complete saw)	CP-42 \$10.00 0.1 Carbide-Tipped 1/4" Diameter - 2" DD	ES-42 \$3.00 0.1 Ejector Spring		
1 1/8"	ISHS-18	92.00	0.8	ISHS-18HO	64.00	0.4					
1 1/4"	ISHS-20	94.00	0.8	ISHS-20HO	66.00	0.4					
1 3/8"	ISHS-22	96.00	0.8	ISHS-22HO	68.00	0.4					
1 1/2"	ISHS-24	100.00	1.0	ISHS-24HO	72.00	0.5	HS-S47 \$20.00				
1 5/8"	ISHS-26	104.00	1.1	ISHS-26HO	76.00	0.6					
1 3/4"	ISHS-28	107.00	1.1	ISHS-28HO	79.00	0.6	HS-S410 27.00 (See pg. 21 for specs.)				
2"	ISHS-32	116.00	1.1	ISHS-32HO	88.00	0.6	HS-S6 \$15.00 (Supplied w/ complete saw)	CP-62 \$10.00 0.1 Carbide-Tipped 3/8" Diameter - 2" DD	ES-62 \$3.00 0.1 Ejector Spring		
2 1/8"	ISHS-34	120.00	1.3	ISHS-34HO	92.00	0.6					
2 1/4"	ISHS-36	126.00	1.3	ISHS-36HO	98.00	0.7	HS-S67 \$20.00				
2 1/2"	ISHS-40	132.00	1.4	ISHS-40HO	104.00	0.8					
3"	ISHS-48	147.00	1.5	ISHS-48HO	119.00	1.1	HS-S610 27.00 (See pg. 21 for specs.)				
4"	ISHS-64	180.00	2.2	ISHS-64HO	152.00	1.8					

• Additional sizes available on request

### WOOD/FIBERGLASS FHS SERIES



#### 2" Drilling Depth Standard

Complete Saw includes:

- Hole saw cutter head
- Shank (HS-S4 or HS-S6)
- Pilot (High Speed Steel)
- Spring

Will cut:

Wood/Fiberglass / Kevlar  
Plexiglass  
PVC / ABS Materials  
Composites  
Soft Plastic / Acrylic  
(Substitute Carbide Pilot)

DIAMETER	COMPLETE			CUTTER-HEAD ONLY			REPLACEMENT SHANKS		REPLACEMENT PILOTS/SPRINGS		
	PART NO.	LIST PRICE	WT. (lbs)	PART NO.	LIST PRICE	WT. (lbs)	PART NO.	LIST PRICE	PART NO.	LIST PRICE	WT. (lbs)
7/8"	FHS-14	\$ 93.00	0.4	FHS-14HO	\$ 65.00	0.3	S-12 \$15.00		SP-42 \$10.00 0.1 High-Speed Steel 1/4" Diameter - 2" DD	ES-42 \$3.00 0.1 Ejector Spring	
1"	FHS-16	95.00	0.7	FHS-16HO	67.00	0.3	HS-S4 \$15.00 (Supplied w/ complete saw)				
1 1/8"	FHS-18	97.00	0.8	FHS-18HO	69.00	0.3	HS-S47 \$20.00				
1 1/4"	FHS-20	98.00	0.8	FHS-20HO	70.00	0.4	HS-S410 27.00 (See pg. 21 for specs.)				
1 3/8"	FHS-22	99.00	0.8	FHS-22HO	71.00	0.4	HS-S6 \$15.00 (Supplied w/ complete saw)	SP-62 \$10.00 0.1 High-Speed Steel 3/8" Diameter - 2" DD	ES-62 \$3.00 0.1 Ejector Spring		
1 1/2"	FHS-24	100.00	1.0	FHS-24HO	72.00	0.5					
1 3/4"	FHS-28	101.00	1.1	FHS-28HO	73.00	0.6	HS-S67 \$20.00				
2"	FHS-32	110.00	1.1	FHS-32HO	82.00	0.6					
2 1/8"	FHS-34	115.00	1.1	FHS-34HO	87.00	0.6	HS-S610 27.00 (See pg. 21 for specs.)				
2 1/4"	FHS-36	117.00	1.3	FHS-36HO	89.00	0.7					
2 1/2"	FHS-40	121.00	1.4	FHS-40HO	93.00	0.7					
2 3/4"	FHS-44	123.00	1.5	FHS-44HO	95.00	1.1					
3"	FHS-48	133.00	1.6	FHS-48HO	105.00	1.1					
3 1/2"	FHS-56	146.00	1.7	FHS-56HO	118.00	1.3					
4"	FHS-64	160.00	2.1	FHS-64HO	132.00	1.6					

• Additional sizes available on request

## BRAZED-CARBIDE HOLE SAWS

### METAL-CUTTING HS SERIES



1" Drilling Depth Standard

Complete Saw includes:

- Hole saw cutter-head
- Shank (HS-S4 or HS-S6)
- Pilot (High-Speed Steel)
- Spring

Will cut:

Carbon Steel  
Cast Iron  
Stainless Steel  
Aluminum  
Hard Rubber  
Titanium  
Formica

DIAMETER	COMPLETE			CUTTER-HEAD ONLY			REPLACEMENT SHANKS		REPLACEMENT PILOTS/SPRINGS		
	PART NO.	LIST PRICE	WT. (lbs)	PART NO.	LIST PRICE	WT. (lbs)	PART NO.	LIST PRICE	PART NO.	LIST PRICE	WT. (lbs)
11/16"	HS-11	\$ 73.00	0.4	HS-11HO	\$ 45.00	0.3	<b>S-12</b> \$15.00 (See pg. 21 for specs.)		<b>SP-41</b> \$10.00 0.1 High-Speed Steel 1/4" Diameter - 1" DD	<b>ES-41</b> \$3.00 0.1 Ejector Spring	
3/4"	HS-12	74.00	0.4	HS-12HO	46.00	0.3					
13/16"	HS-13	75.00	0.4	HS-13HO	47.00	0.4					
7/8"	HS-14	76.00	0.4	HS-14HO	48.00	0.3					
15/16"	HS-15	77.00	0.5	HS-15HO	49.00	0.3					
1"	HS-16	77.00	0.6	HS-16HO	49.00	0.3	<b>HS-S4</b> \$15.00 (Supplied w/ complete saw)				
1 1/8"	HS-18	78.00	0.7	HS-18HO	50.00	0.4					
1 1/4"	HS-20	81.00	0.7	HS-20HO	53.00	0.4					
1 3/8"	HS-22	83.00	0.8	HS-22HO	55.00	0.4					
1 1/2"	HS-24	85.00	0.9	HS-24HO	57.00	0.4					
1 5/8"	HS-26	87.00	1.0	HS-26HO	59.00	0.5	<b>HS-S410</b> 27.00 (See pg. 21 for specs.)				
1 3/4"	HS-28	89.00	1.1	HS-28HO	61.00	0.6					
1 7/8"	HS-30	99.00	1.1	HS-30HO	71.00	0.6					
2"	HS-32	100.00	1.1	HS-32HO	72.00	0.6					
2 1/8"	HS-34	102.00	1.3	HS-34HO	74.00	0.7					
2 1/4"	HS-36	104.00	1.4	HS-36HO	76.00	0.8	<b>HS-S6</b> \$15.00 (Supplied w/ complete saw)				
2 3/8"	HS-38	108.00	1.4	HS-38HO	80.00	0.8					
2 1/2"	HS-40	109.00	1.6	HS-40HO	81.00	0.8					
2 3/4"	HS-44	113.00	1.6	HS-44HO	85.00	0.8					
3"	HS-48	123.00	1.7	HS-48HO	95.00	0.9					
3 1/4"	HS-52	132.00	1.9	HS-52HO	104.00	1.6	<b>HS-S610</b> 27.00 (See pg. 21 for specs.)				
3 1/2"	HS-56	139.00	2.3	HS-56HO	111.00	1.9					
4"	HS-64	160.00	2.6	HS-64HO	132.00	2.2					

• Additional sizes available on request

### INTERRUPTED-CUT STHS SERIES



2" Drilling Depth Standard

Complete Saw includes:

- Hole saw cutter head
- Shank (HS-S4 or HS-S6)
- Pilot (High-Speed Steel)
- Spring

Will cut:

Pipe  
Trench Duct  
Cellular Metal  
- and -  
all types of ferrous & non-ferrous metals where an "interrupted" cut may occur

DIAMETER	COMPLETE			CUTTER-HEAD ONLY			REPLACEMENT SHANKS		REPLACEMENT PILOTS/SPRINGS		
	PART NO.	LIST PRICE	WT. (lbs)	PART NO.	LIST PRICE	WT. (lbs)	PART NO.	LIST PRICE	PART NO.	LIST PRICE	WT. (lbs)
3/4"	STHS-12	\$94.00	0.4	STHS-12HO	\$66.00	0.3	<b>S-12</b> \$15.00 (See pg. 21 for specs.)		<b>SP-42</b> \$10.00 0.1 High-Speed Steel 1/4" Diameter - 2" DD	<b>ES-42</b> \$3.00 0.1 Ejector Spring	
7/8"	STHS-14	95.00	0.5	STHS-14HO	67.00	0.3					
1"	STHS-16	98.00	0.8	STHS-16HO	70.00	0.4					
1 1/8"	STHS-18	103.00	0.8	STHS-18HO	75.00	0.4					
1 1/4"	STHS-20	108.00	0.8	STHS-20HO	80.00	0.5					
1 3/8"	STHS-22	111.00	0.9	STHS-22HO	83.00	0.5	<b>HS-S4</b> \$15.00 (Supplied w/ complete saw)				
1 1/2"	STHS-24	115.00	1.1	STHS-24HO	87.00	0.6					
1 3/4"	STHS-28	119.00	1.3	STHS-28HO	91.00	0.8					
2"	STHS-32	133.00	1.4	STHS-32HO	105.00	0.9					
2 1/4"	STHS-36	138.00	1.7	STHS-36HO	110.00	1.0					
2 3/8"	STHS-38	143.00	1.8	STHS-38HO	115.00	1.1	<b>HS-S6</b> \$15.00 (Supplied w/ complete saw)				
2 1/2"	STHS-40	147.00	1.9	STHS-40HO	119.00	1.1					
2 3/4"	STHS-44	160.00	1.9	STHS-44HO	132.00	1.4					
3"	STHS-48	174.00	2.1	STHS-48HO	146.00	1.6					
3 1/4"	STHS-52	189.00	2.3	STHS-52HO	161.00	1.9					
3 1/2"	STHS-56	202.00	2.6	STHS-56HO	174.00	2.2	<b>HS-S610</b> 27.00 (See pg. 21 for specs.)				
3 3/4"	STHS-60	213.00	2.8	STHS-60HO	185.00	2.4					
4"	STHS-64	218.00	3.2	STHS-64HO	190.00	2.7					

• Additional sizes available on request



## BRAZED-CARBIDE HOLE SAWS

### TUB, TILE & SPA HST SERIES



#### 2" Drilling Depth Standard

##### Complete Saw includes:

- Hole saw cutter-head
- Shank (HS-S4 or HS-S6)
- Pilot (Carbide tipped)
- Spring

##### Will cut:

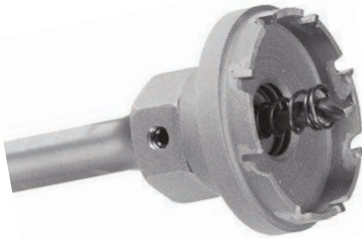
**Spas & Hot Tubs**  
**Ceramic Tile\***  
**Marble\* / Granite\***  
**Gelcoat Fiberglass**

\*Because of the differing densities of these materials, the number of holes cut may vary. Slow drilling speeds are recommended, and in some cases, marble and granite may not be drillable with carbide tools.

DIAMETER	COMPLETE			CUTTER-HEAD ONLY			REPLACEMENT SHANKS		REPLACEMENT PILOTS/SPRINGS		
	PART NO.	LIST PRICE	WT. (lbs)	PART NO.	LIST PRICE	WT. (lbs)	PART NO.	LIST PRICE	PART NO.	LIST PRICE	WT. (lbs)
3/4"	HST-12	\$ 86.00	0.4	HST-12HO	\$ 58.00	0.3	S-12 \$15.00 (See below for specs.)	HS-S4 \$15.00 (Supplied w/ complete saw)	CP-42 \$10.00 0.1 Carbide-Tipped 1/4" Diameter - 2" DD	ES-42 \$3.00 0.1 Ejector Spring	
7/8"	HST-14	88.00	0.4	HST-14HO	60.00	0.3					
1"	HST-16	91.00	0.6	HST-16HO	63.00	0.3					
1 1/8"	HST-18	93.00	0.8	HST-18HO	65.00	0.3					
1 1/4"	HST-20	94.00	0.8	HST-20HO	66.00	0.4					
1 3/8"	HST-22	98.00	0.9	HST-22HO	70.00	0.4					
1 1/2"	HST-24	99.00	1.0	HST-24HO	71.00	0.5					
1 5/8"	HST-26	100.00	1.0	HST-26HO	72.00	0.6					
1 11/16"	HST-27	101.00	1.1	HST-27HO	73.00	0.6					
1 3/4"	HST-28	102.00	1.1	HST-28HO	74.00	0.6					
1 15/16"	HST-31	121.00	1.2	HST-31HO	93.00	0.7					
2"	HST-32	123.00	1.3	HST-32HO	95.00	0.7	HS-S6 \$15.00 (Supplied w/ complete saw)	HS-S67 \$20.00 HS-S610 27.00 (See below for specs.)	CP-62 \$10.00 0.1 Carbide-Tipped 3/8" Diameter - 2" DD	ES-62 \$3.00 0.1 Ejector Spring	
2 1/8"	HST-34	125.00	1.3	HST-34HO	97.00	0.7					
2 1/4"	HST-36	127.00	1.4	HST-36HO	99.00	0.8					
2 1/2"	HST-40	138.00	1.4	HST-40HO	110.00	0.8					
3"	HST-48	149.00	1.5	HST-48HO	121.00	1.1					

• Additional sizes available on request

### THIN GAUGE TG SERIES



**NEW 2-PIECE DESIGN**  
**For materials up to 1/4" thick**

##### Excellent for all materials:

- Sheet metal
- Stainless steel
- Thin plastics

**Smooth, clean holes**  
**Easy plug removal**  
**Removable shank**

DIAMETER	COMPLETE			CUTTER-HEAD ONLY			REPLACEMENT SHANKS		REPLACEMENT PILOTS/SPRINGS		
	PART NO.	LIST PRICE	WT. (lbs)	PART NO.	LIST PRICE	WT. (lbs)	PART NO.	LIST PRICE	PART NO.	LIST PRICE	WT. (lbs)
3/4"	TG-12	\$ 54.00	0.4	TG-12HO	\$ 26.00	0.3	S-12 \$15.00 (See below for specs.)		TGP-4 \$10.00 0.1 High-Speed Steel 1/4" Diameter	ES-40 \$3.00 0.1 Ejector Spring	
13/16"	TG-13	55.00	0.4	TG-13HO	27.00	0.3					
7/8"	TG-14	56.00	0.6	TG-14HO	28.00	0.3	HS-S4 \$15.00 (Supplied w/ complete saw)				
1"	TG-16	58.00	0.8	TG-16HO	30.00	0.3					
1 1/16"	TG-17	61.00	0.8	TG-17HO	33.00	0.4					
1 1/8"	TG-18	63.00	0.9	TG-18HO	35.00	0.4					
1 7/32"	TG-195	64.00	1.0	TG-195HO	36.00	0.5					
1 1/4"	TG-20	66.00	1.0	TG-20HO	38.00	0.6					
1 5/16"	TG-21	67.00	1.1	TG-21HO	39.00	0.6					
1 3/8"	TG-22	68.00	1.1	TG-22HO	40.00	0.6					
1 7/16"	TG-23	69.00	1.2	TG-23HO	41.00	0.7					
1 1/2"	TG-24	74.00	1.3	TG-24HO	46.00	0.7					
1 5/8"	TG-26	83.00	1.3	TG-26HO	55.00	0.7					
1 3/4"	TG-28	86.00	1.4	TG-28HO	58.00	0.8					
2"	TG-32	90.00	1.4	TG-32HO	62.00	0.8					
2 1/8"	TG-34	102.00	1.5	TG-34HO	74.00	1.1					
2 1/4"	TG-36	103.00	1.5	TG-36HO	75.00	1.1					
2 3/8"	TG-38	104.00	1.5	TG-38HO	76.00	1.1					
2 1/2"	TG-40	106.00	1.5	TG-40HO	78.00	1.1					
							HS-S410 27.00 (See below for specs.)				

• Additional sizes available on request



#### S-12 Shank

1/2-13 threads, 1/4" pilot hole  
3/8" round shank w/3 flats  
3" OAL Wt. 0.4

### HOLE SAW SHANK SPECIFICATIONS

#### HS-S4 Series Shanks

3/4-10 threads, 1/4" pilot hole  
1/2" round shank w/3 flats

**HS-S4** - 3" OAL Wt. 0.5  
**HS-S47** - 7" OAL Wt. 0.8  
**HS-S410** - 10" OAL Wt. 1.2

#### HS-S6 Series Shanks

3/4-10 threads, 3/8" pilot hole  
1/2" round shank w/3 flats

**HS-S6** - 3" OAL Wt. 0.5  
**HS-S67** - 7" OAL Wt. 0.8  
**HS-S610** - 10" OAL Wt. 1.2

### CARBIDE PILOTS FOR HS SERIES



PART NO.	DESCRIPTION	LIST PRICE	WT. (lbs)
CP-41	1/4" X 1" DD CARBIDE-TIPPED	\$ 10.00	.01
CP-61	3/8" X 1" DD CARBIDE-TIPPED	10.00	.01

## SPECIALTY HOLE SAW

### How to order a special hole saw

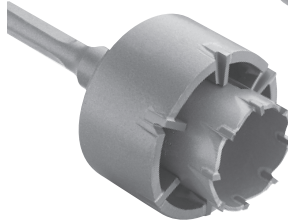
1. Specify material to be cut.
2. Specify diameter.
3. Specify depth of cut.
4. Specify shank diameter (if needed).

Example:

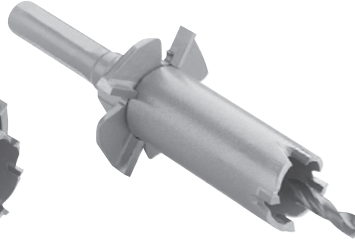
4 1/2"dia x 10"dd Wood Cut with 1 1/4-7 threads for diamond drill rig.



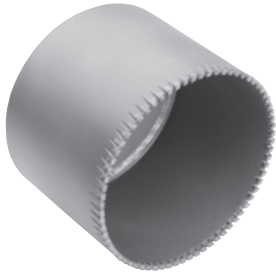
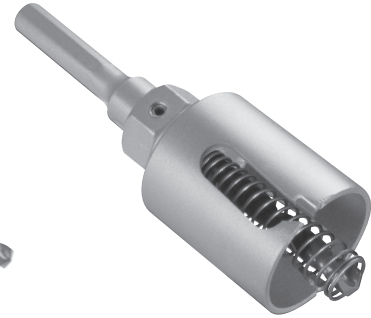
TO FIT DIAMOND DRILL RIGS



BACK HOLE SAWS



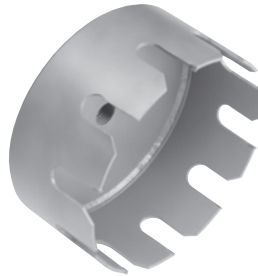
WOOD-CUTTING



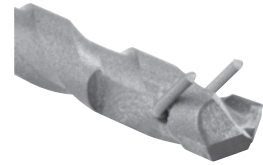
HOT PIPE-TAPPING



DEEP-HOLE  
METAL-CUTTING



PLASTIC  
PIPE-TAPPING



COUPON-  
RETAINING PILOT

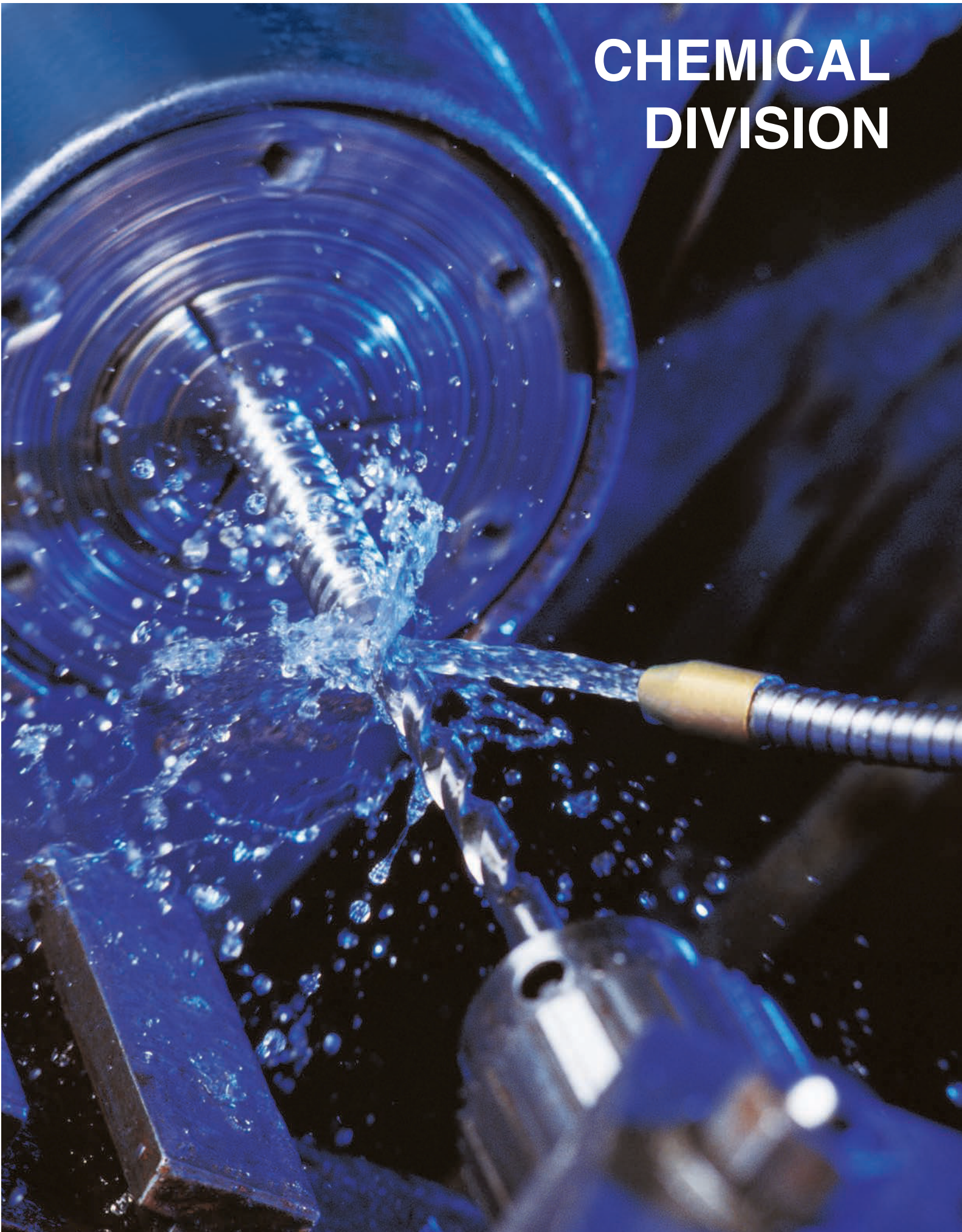
## FACTORY SERVICE SCHEDULE

### HOLE SAWS

DIAMETER	SHARPEN ONLY	REPLACE CARBIDE & SHARPEN
1/2" thru 11/16"	\$ 10.00	\$7.50 each carbide + \$ 10.00 sharpen
3/4" thru 1 3/4"	11.00	7.50 each carbide + 11.00 sharpen
1 7/8" thru 2 3/4"	12.00	7.50 each carbide + 12.00 sharpen
3" thru 4"	15.00	7.50 each carbide + 15.00 sharpen
All Carbide-Tipped Pilots	6.50	Sharpen only available



# CHEMICAL DIVISION



# METAL-CUTTING FLUIDS



## All-Metal Cutting Fluid and Paste



- Greatly extends tool life
- Super-fine machined finish in operation after operation
- Anti-mist protection for a healthier work environment
- No special labeling or reporting
- Excels in tough materials
- Contains no 1,1,1- trichloroethane or other ozone-depleting chemicals

### NEW RAPID TAP

PART #	DESCRIPTION	CASE QTY	LIST PRICE	CASE/DRUM WEIGHT† (LBS.)
			CASE/DRUM	
04Z-NRT	4 Ounce Bottles	24	\$ 75.00	8
PNT-NRT	1 Pint Bottles	12	120.00	15
01G-NRT	1 Gallon Bottles	4	225.00	38
05G-NRT	5 Gallon Pail		265.00	47
55G-NRT	55 Gallon Drum		1,950.00	514

### NEW RAPID TAP PASTE

08Z-NRTP	8 Ounce Jar	12	\$140.00	9
----------	-------------	----	----------	---



## Aluminum-Cutting Fluid



- Eases all operations on aluminum: milling, broaching, drilling, threading, tapping, reaming, sawing, etc.
- Contains anti-mist component for a healthier work environment
- Contains a scientific blend of chemicals that attach to aluminum surfaces, forming an extreme-pressure boundary lubricant between tool and work surface

PART #	DESCRIPTION	CASE QTY	LIST PRICE	CASE/DRUM WEIGHT† (LBS.)
			CASE/DRUM	
04Z-A9	4 Ounce Bottles	24	\$ 75.00	8
PNT-A9	1 Pint Bottles	12	120.00	13
01G-A9	1 Gallon Bottles	4	225.00	34
05G-A9	5 Gallon Pail		265.00	42
55G-A9	55 Gallon Drum		1,950.00	460

† Shipping weights are approximate and rounded to the nearest pound.



## METAL-CUTTING FLUIDS



### Biodegradable Metal-Cutting Fluid\*



- Option 1 leaves no oily residue
- Water-based
- Contains no 1,1,1- trichloroethane or other ozone-depleting chemicals
- Cleans up with clean dry cloth or water
- Great for use in computer clean rooms, hospitals or when a weld operation follows machining operations

PART #	DESCRIPTION	CASE QTY	LIST PRICE	CASE/DRUM WEIGHT <sup>†</sup> (LBS.)
			CASE/DRUM	
04Z-OP	4 Ounce Bottles	24	\$ 75.00	9
PNT-OP	1 Pint Bottles	12	120.00	15
01G-OP	1 Gallon Bottles	4	225.00	38
05G-OP	5 Gallon Pail		265.00	48
55G-OP	55 Gallon Drum		1,950.00	506

\*Not for use on metals that are water reactive, such as magnesium

## SEMI-SYNTHETIC BAND-SAW COOLANT

### REL SAW™ BAND-SAW COOLANT CONCENTRATE



- Improves blade life
- Stable over a wide variety of water conditions
- Promotes cleaner-running machines compared to soluble oils
- Reduces machine wear
- Long emulsion life
- Contains rust and corrosion inhibitors

PART #	DESCRIPTION	CASE QTY	LIST PRICE	CASE/DRUM WEIGHT <sup>†</sup> (LBS.)
			CASE/DRUM	
01G-RS	1 Gallon Bottles	4	\$135.00	38
05G-RS	5 Gallon Pail		145.00	45
55G-RS	55 Gallon Drum		1,300.00	507

<sup>†</sup> Shipping weights are approximate and rounded to the nearest pound.

# CUTTING OILS

## TCO-14™

Dark

- Ready to cut clean, smooth threads on all pipe materials
- Extreme-pressure additive for anti-weld characteristics
- Excellent protection of tools and machined parts against corrosion
- Contains anti-mist component for a healthier work environment

### Thread-Cutting Oil

PART #	DESCRIPTION	CASE QTY	LIST PRICE	CASE/DRUM WEIGHT† (LBS.)
			CASE/DRUM	
01G-TCO14	1 Gallon Bottles	4	\$ 95.00	34
05G-TCO14	5 Gallon Pail		105.00	42
55G-TCO14	55 Gallon Drum		750.00	463



## TCO-16™

Light

- Operationally interchangeable with TCO-14 (Dark)

### Thread-Cutting Oil

PART #	DESCRIPTION	CASE QTY	LIST PRICE	CASE/DRUM WEIGHT† (LBS.)
			CASE/DRUM	
01G-TCO16	1 Gallon Bottles	4	\$ 95.00	35
05G-TCO16	5 Gallon Pail		105.00	42
55G-TCO16	55 Gallon Drum		750.00	463



† Shipping weights are approximate and rounded to the nearest pound.

## LUBRICATING OILS

**Air-FLO®**  
AIR TOOL OIL



### For piston-driven & rotary air tools

AIR-FLO Air Tool Oil incorporates both the latest technology and finest materials to produce a premium air-tool oil. Manufactured from solvent-refined, hydro-treated paraffinic base stocks, AIR-FLO is fortified with additives to provide anti-wear, extreme-pressure, oxidation-resistance, anti-rust and foam-protection qualities.

- Superior oxidation stability
- Resistance to formation of gums, sludges, and deposits
- Anti-wear fortified for extended life, lower maintenance
- Protection against rust and corrosion
- Excellent seal compatibility
- Metal-wetting properties
- Dirt particles held in suspension
- Contaminants flushing
- 10wt non-detergent

PART #	DESCRIPTION	CASE QTY	LIST PRICE	CASE/DRUM WEIGHT† (LBS.)
			CASE/DRUM	
04Z-AF	4 Ounce Bottles	24	\$125.00	8
PNT-AF	1 Pint Bottles	12	85.00	14
01G-AF	1 Gallon Bottles	4	85.00	33
55G-AF	55 Gallon Drum		925.00	441

## LUBRICATING STICK WAX

**STICK-KUT™**  
LUBRICATING  
STICK WAX



- Safe and effective lubricant for grinding wheels, sanding belts and saw blades
- Eliminates heat build up and belt loading
- Extends wheel life
- Provides smooth, cool cutting
- Reduces loading, stops binding, and prevents burring

PART #	DESCRIPTION	CASE QTY	LIST PRICE	CASE WEIGHT† (LBS.)
			CASE	
15-SK	15 Ounce Stick	12	\$140.00	12

† Shipping weights are approximate and rounded to the nearest pound.



# RELTON CORPORATION



317 ROLYN PLACE, ARCADIA, CALIFORNIA 91007-2838 • P.O. BOX 60019, ARCADIA, CA 91066-6019  
Ph (800) 423-1505 • (626) 446-8201 • Fax (626) 446-9671 • [www.relton.com](http://www.relton.com) • e-mail [info@relton.com](mailto:info@relton.com)



## WAREHOUSE LOCATIONS

### ILLINOIS

**GAUDIN INDUSTRIAL SALES**  
355-357 REMINGTON BLVD.  
BOLINGBROOK, IL 60440  
(630) 410-2030 (OFF.)  
(630) 410-2905 (FAX)

### CANADA (Chemical Only)

**BESSEY TOOLS NORTH AMERICA**  
1165 FRANKLIN BLVD., UNIT G  
CAMBRIDGE, ONTARIO  
CANADA N1R 8E1  
(519) 621-7240 (OFF.)  
(519) 621-3442 (FAX)

### CANADA (Carbide Only)

**DISTRIBUTION TECHNOLOGIES**  
1721 BISHOP STREET, UNIT 6  
CAMBRIDGE, ONTARIO  
CANADA N1T 1N5  
(519) 622-6465 (OFF.)  
(519) 622-4142 (FAX)

### OREGON

**W.G. WRIGHT ASSOCIATES**  
1525 S.E. 10TH AVENUE  
PORTLAND, OR 97214  
(503) 232-3480 (OFF.)  
(503) 232-0401 (FAX)

### CALIFORNIA - SOUTHERN

**RELTON CORPORATION**  
317 ROLYN PLACE  
ARCADIA, CA 91007-2838  
(800) 423-1505  
(323) 681-2551 (OFF.)  
(626) 446-9671 (FAX)

### MASSACHUSETTS

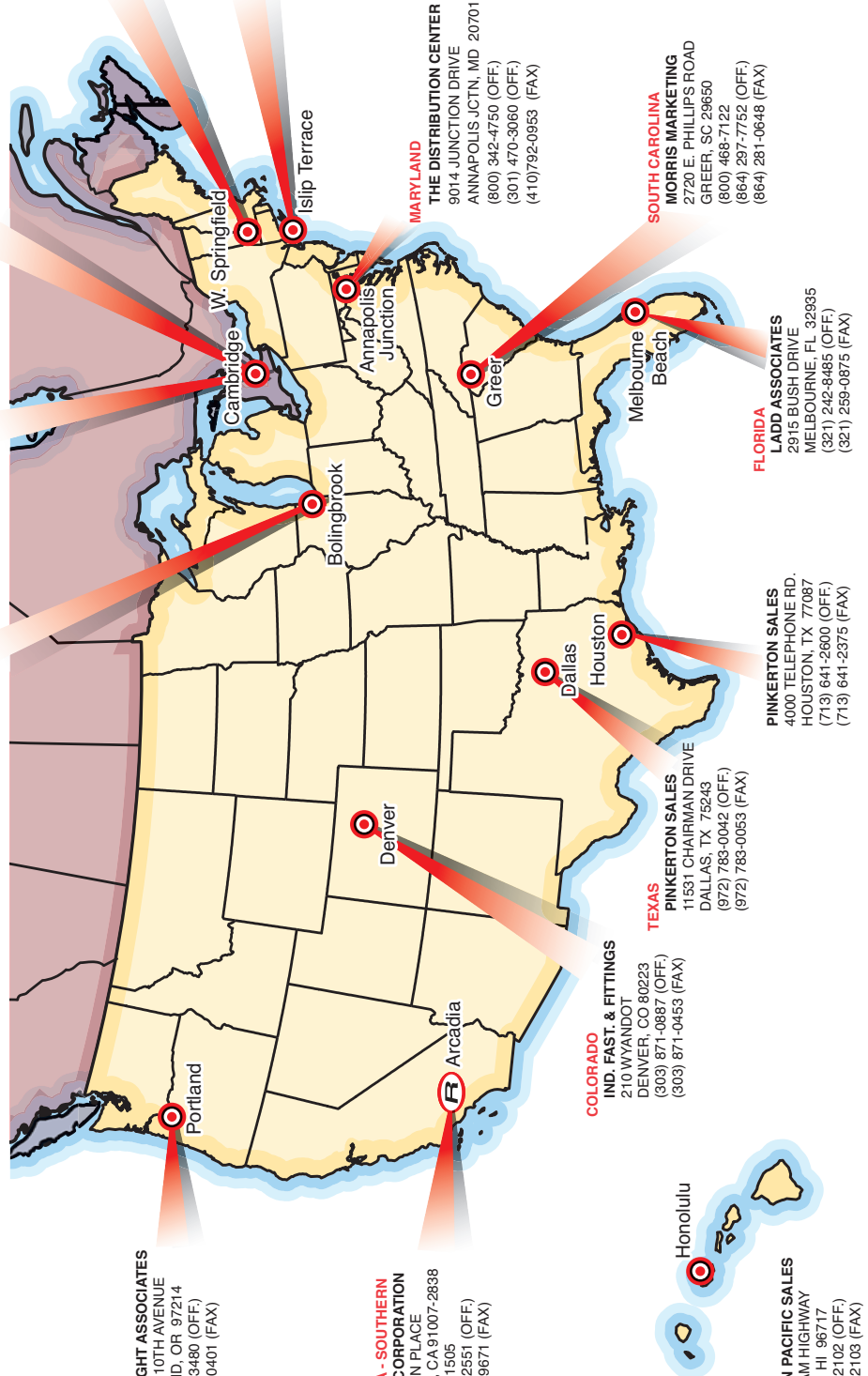
**TURPIN WHOLESAL INC**  
330 COLD SPRING AVE  
WEST SPRINGFIELD, MA 01089  
(413) 733-6700 (OFF.)  
(413) 747-2600 (FAX)

### NEW YORK

**CUTLER INDUSTRIAL SALES**  
160 IRISH LANE  
ISLIP TERRACE, NY 11752  
(631) 277-4930 (OFF.)  
(631) 581-5968 (FAX)

### SALES OFFICE ONLY:

<b>CALIFORNIA</b> Northern C & R ASSOC.	415-518-1115
<b>COLORADO</b> HUNTER & ASSOC.	970-484-5179
<b>INDIANA</b> TIER 2 GROUP	317-219-3059
<b>MARYLAND</b> MCCARTHY ASSOC.	410-218-1400
<b>MASSACHUSETTS</b> PRIME-LINE MARKETING	413-732-1935
<b>MISSOURI</b> MCGOVERN ENT.	816-941-8101
<b>NEW YORK</b> FOSTER & ROSEN	716-649-9840
<b>OHIO</b> WILCOM	877-945-2665
<b>PENNSYLVANIA</b> VOELP ASSOC.	724-452-0277
<b>CANADA - MARIOTTES</b> HOOTON & HOOTON	506-642-7291
<b>MEXICO</b> BAXTER INTERNATIONAL	210-829-7793



### COLORADO

**IND. FAST. & FITTINGS**  
210 WYANDOT  
DENVER, CO 80223  
(303) 871-0887 (OFF.)  
(303) 871-0453 (FAX)

### TEXAS

**PINKERTON SALES**  
11531 CHAIRMAN DRIVE  
DALLAS, TX 75243  
(972) 783-0042 (OFF.)  
(972) 783-0053 (FAX)

**PINKERTON SALES**  
4000 TELEPHONE RD.  
HOUSTON, TX 77087  
(713) 641-2600 (OFF.)  
(713) 641-2375 (FAX)

### FLORIDA

**LADD ASSOCIATES**  
2915 BUSH DRIVE  
MELBOURNE, FL 32935  
(321) 242-8485 (OFF.)  
(321) 259-0875 (FAX)

### SOUTH CAROLINA

**MORRIS MARKETING**  
2720 E. PHILLIPS ROAD  
GREER, SC 29650  
(800) 468-7122  
(864) 237-7752 (OFF.)  
(864) 281-0648 (FAX)